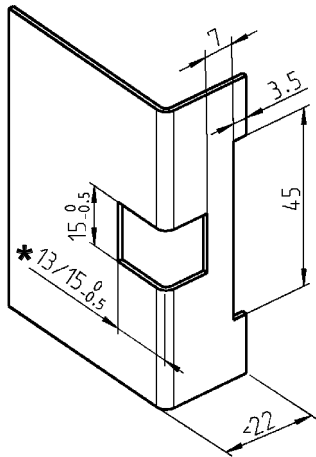


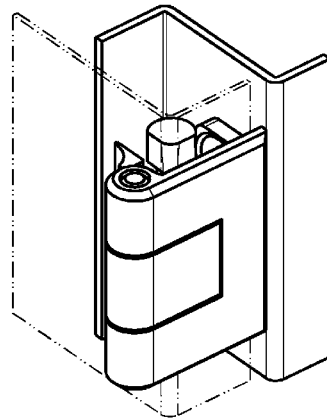
# 180° hinge

## PROGRAM 1110

180° hinge for inline cabinets with double doors

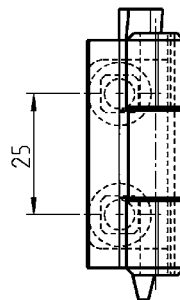
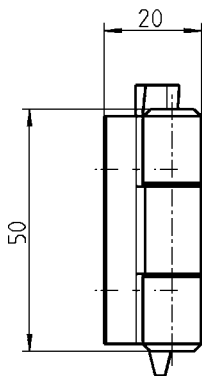


Cut out

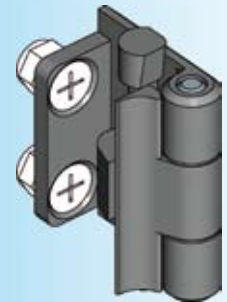
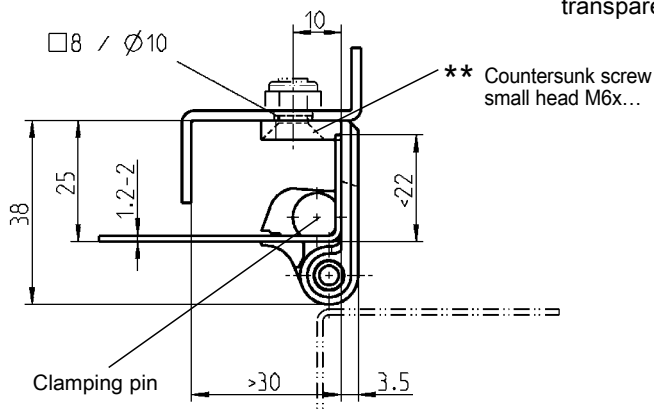


**Assembling:**  
Hinge is fixed by driving in the clamping pin.

- \* Door thickness 1.2-1.5=13 mm
- Door thickness 1.5-2.0=15 mm



Hinge depicted transparent



\*\* not included

Hinge zinc die black powder-coated;  
clamping pin polyamide GF black;

small head = DIN ISO 2009,  
2010, 7046-1, 7046-2, 7047

1110-U140