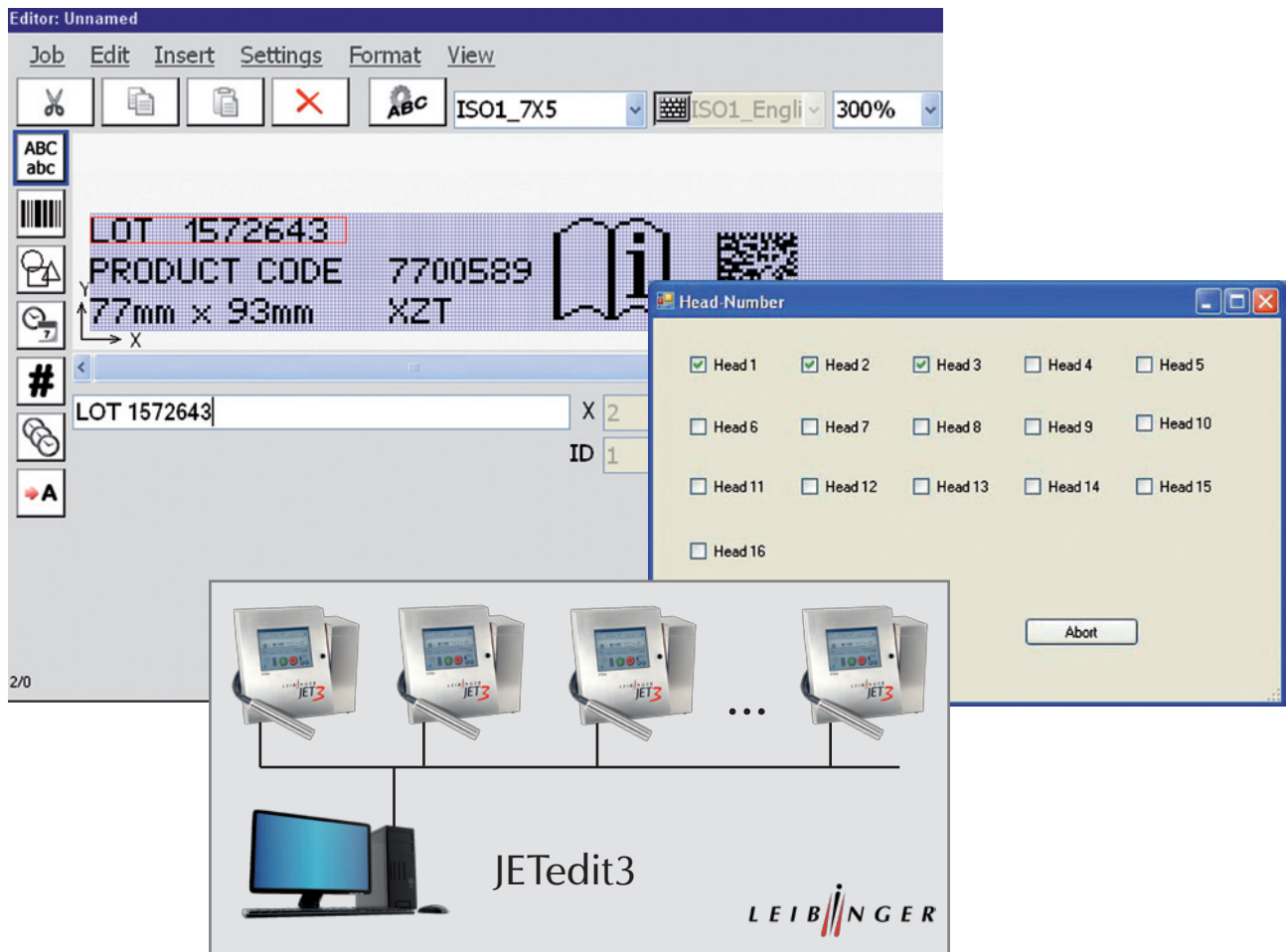


JETedit3

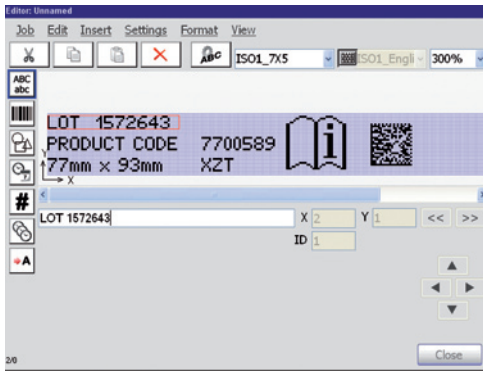


PC-software for creating print layouts

Easily create jobs for JET3 printers at your PC

LEIBINGER

JETedit3

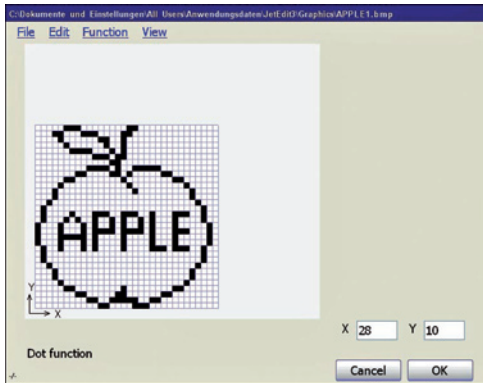


Production planning for the inkjet printer LEIBINGER JET3

JETedit3 is the efficient tool for optimizing your print jobs. Simply create jobs for the LEIBINGER inkjet printer JET3 at the PC; JETedit3 enables it. By means of the explorer printing data is directly sent to the connected JET3 printers. Data transfer via USB stick or SD card can be omitted.

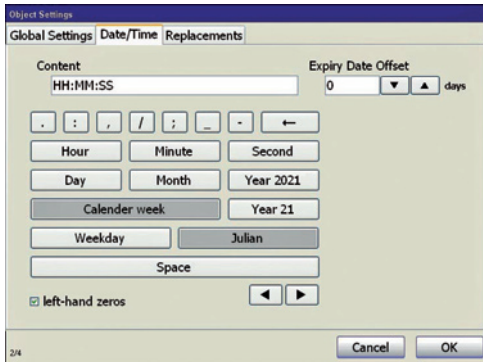
Easily import, create, save or copy jobs and graphics by means of the familiar PC surrounding. Aside from graphics also text as well as 1D- and 2D-barcodes can be transferred.

JETedit3 provides all functions, such as various counters, date, times, shift codes and replacements. For simple and fast handling the integrated editor for creating graphics matches exactly the graphic editor of the JET3 printer.



Management of multiple print jobs

Comfortable for the user, with JETedit3 at the PC he can manage multiple print jobs at the same time. In doing so parameters can be adjusted, e.g. like the print delay, font width, shaft encoder settings or changes of date. With this function it is even possible to copy jobs easily and quickly.

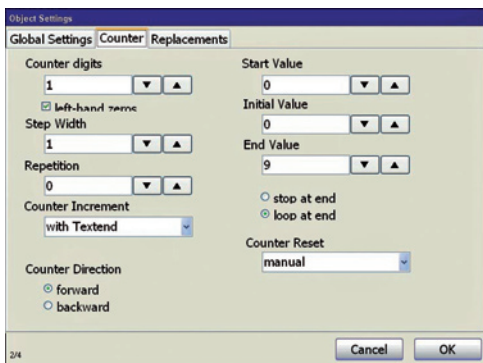


Data backup

JETedit3 also works as a main data backup. With the new software you can save data centrally in the PC and archive them reliably.

Cloning of printers

Individual settings of printers and printing data with graphics and jobs can be transferred easily and quickly from one printer to another by using JETedit3.



Windows based user interface

For creating and editing of jobs and graphics the menu navigation of JETedit3 closely follows the Windows user interface and is self explanatory. The job editor is the same as in the JET3, just as simply configured and already known to users of JET3 printers.

PC and inkjet printer are connected via Ethernet-connection or the serial RS232-interface.

System requirements for the application of JETedit3

- Operating system: Windows XP Prof., Windows 7 or Windows 8
- At least 200 MB free hard-disc storage
- At least 200 MB free RAM storage
- Graphics board with a resolution of at least 1024x768 pixels
- Network connection (LAN) or a serial COM-port (e.g. RS232) for each JET3 printer

Errors and changes reserved. All logos and brands used are registered trademarks or brands of the manufacturer.



Paul Leibinger GmbH & Co. KG
Daimlerstr. 14
D-78532 Tuttlingen
Phone +49 (0) 74 61 / 92 86 - 0
Fax +49 (0) 74 61 / 92 86 - 199

www.leibinger-group.com
info@leibinger-group.com



Local distributor contact: