

Round Chuck EPMradial

Electropermanent Magnetic Chucks

These Electropermanent Magnetic Chucks are ideal for clamping distortionfree big discs, rings or bearings for windmills. Even hardened rings can be finished best. Centric holes or through holes can be drilled.

All the advantages of fixed and mobile pole extensions of Magnaslot can be used, to reach best surface quality.



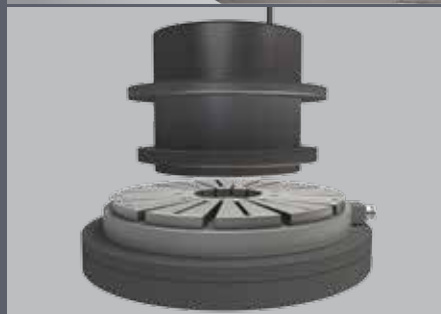
👉 EPMradial from Ø 600 mm

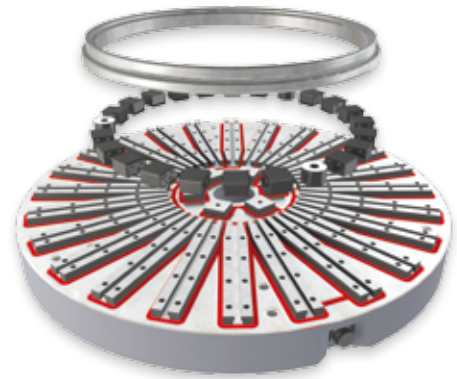


Application

- ▶ Universal use for clamping ferromagnetic workpieces, particularly on lathes and rotary table grinding machines
- ▶ Ideal for bearing ring processing, also for hard processing

👉 EPMradial-P to Ø 600 mm





Professional advantages

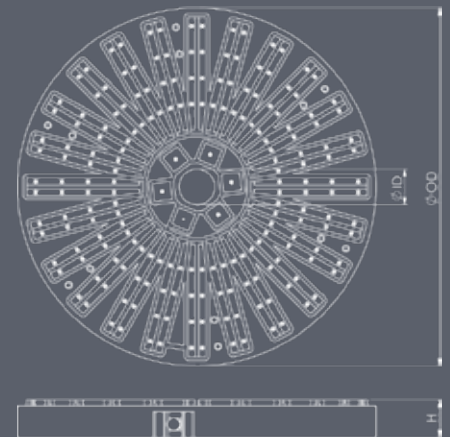
- ▶ Extremely short set-up times due to simple and fast clamping of workpieces
- ▶ 5-side machining with less stress, less torsions, less vibrations by means of fixed and mobile pole extensions
- ▶ No damages to the magnetic chuck by breakouts or through machining, if pole extensions are used
- ▶ Sensible magnet power adjustment for thin workpieces or for aligning

Features

- ⌚ Extremely high magnetic power with activation within seconds
- ⌚ Through holes, poleshoes without or with T-slots, fixed and mobile pole extensions for ease of clamping and machining
- ⌚ The shielded and protected cable from the controller can be connected to the chuck by bayonet or slipping. The chuck controller can be integrated in CNC-machine controller

Options

- ⌚ For controllers and pole extensions -> see Accessories on page 15



Technical data

	External diameter	Internal diameter	Height	No.
	[mm]	[mm]	[mm]	
EPMradial 600	600	200	90	65047
EPMradial 800	800	250	90	63541
EPMradial 1000	1,000	250	90	on request
EPMradial 1250	1,250	500	90	on request
...	other sizes on request			