

Flexible Electronics & Large-area Conductor Paths

Advantages of Textile Conductor Paths

- Barely any restrictions for the dimensions of your products (e.g., 2,500 × 1,500 mm possible)
- Highly conductible and robust
- Heat resistant and reliable
- Efficient production
- Elimination of safety issues
- Non-corrosive if needed – high tech outdoors



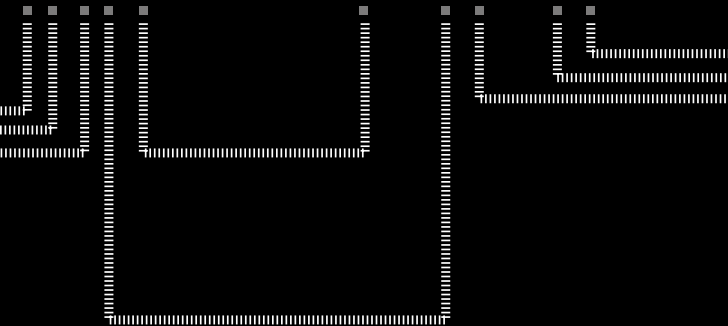
Embro GmbH
Klingenthaler Str. 109
08209 Auerbach
Germany

Tel.: +49 3744/ 184229-0
info@embro-tech.com

www.embro-tech.com



We embroider
innovative products



www.embro-tech.com



Technical Embroidery:
CNC embroidery machines lay conductible threads and (stranded) wires onto carrier materials

Technical Embroidery is Our Passion

Embro is your specialist for professional technical embroidery. Specializing on the fields of functional and smart textiles, we are an established, innovative, and competent partner for our customers.

Together with you, we will find a unique solution that solves even the most complex problem.

Consult us at: +49 3744 1842 290



Bringing to Life: Smart Living

There is nothing smart textiles cannot do. Upgrading textiles so that they can **conduct, send, gather, and receive** information or **emit heat or light** while they retain their initial properties is what makes these textile structures incredibly valuable for medical, athletic, and leisure applications that require elasticity and electronics.

The installation of thermoswitches, NTCs, or wire harnesses allows for professional semi-finished products that are virtually plug&play upon arrival.

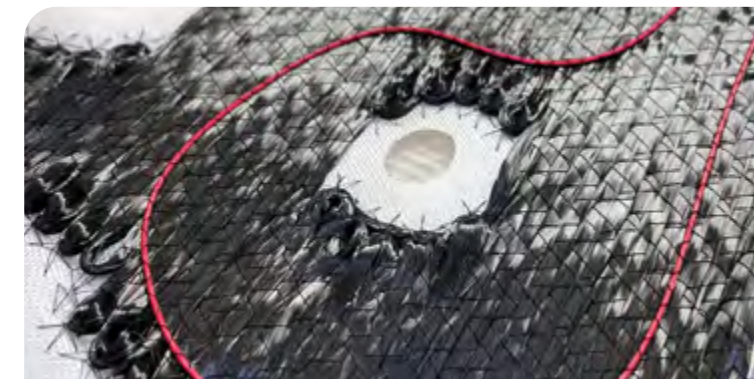


Smart Move: Heating Mats for e-Mobility

Heating up the interior of your car so that your ride is truly pleasant or **protecting the car's battery from harmful thermal environments** - precisely calibrated electric heating mats are an essential in the design of electric cars.

Application of textile heating mats:

- ✓ in electric cars and hybrid vehicles
- ✓ for electric commercial vehicles
- ✓ battery-powered industrial applications



Composites with Integrated Functionalities

Production of dry preforms using innovative **Tailored Fiber Placement** technology. In-mold-electronics: creating **lightweight components** with integrated sensors and electronics.

Advantages of functional integrations:

- ✓ Reduction of weight
- ✓ Local reinforcements possible
- ✓ Almost no wastage – hence, reduced costs
- ✓ No additional costs for special tools
- ✓ Large serial production possible