

# REA JET

INDUSTRIAL CODING AND  
MARKING SOLUTIONS -  
MADE IN GERMANY

## REA JET DOD 2.0

Impressive all the way

The new Generation of Large Character Printing Systems



# The Benchmark in its Class: REA JET DOD 2.0

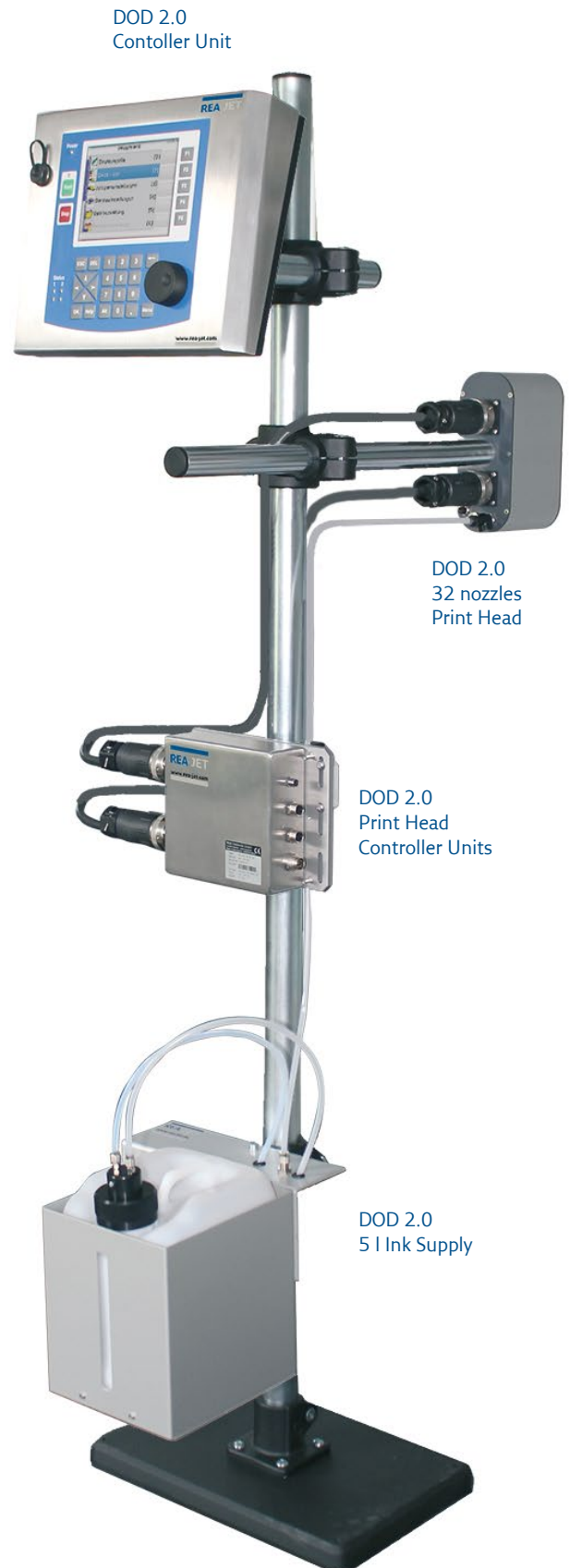
## Print head brain work which pays off for our customers



Determined to further improve our legendary sturdy REA JET DOD large character print heads, we took into consideration two common customer requirements:

1. Doubling of the previous speed potential up to 600 m/min
2. Increased durability due to less wear

→ **Mission accomplished!**



## Technology improved



### High-tech Materials

New materials for less wear



### REA JET Know How

Further developed REA JET print head technology



### Production Precision

Latest production processes allow for highest accuracy

# REA JET DOD 2.0 – Control Center

## Designed for Global Compatibility

- Sturdy and high-quality stainlesssteel casing designed for daily work in harsh and rugged industrial environments
- Full Unicode support: all global languages can be printed for companies with international customers
- Support of all True Type Fonts (TTFs): maximum design flexibility for your print texts
- 24 V power supply: for direct integration into machines and systems
- Wide range power supply available: for immediate global use
- XML-based data structure and communication protocol: globally standard for data compatibility
- Integrated VNC-Server: Remote maintenance tool for diagnosis and support
- Ready for Industry 4.0

## Get connected

- Power supply: 24 V DC from SELV-Power Supply
- External power adaptor IP67 (100 V – 277 V AC, 50-60 Hz)
- Ethernet interface 100 Mbit/s M12-D-coded for fast data exchange
- Serial interfaces RS232/422
- USB interface



REA JET DOD 2.0 – Print Head Controller Units  
Top: 32 nozzles, bottom: 7/16 nozzles



REA JET DOD 2.0 Controller Unit

- Protection Class IP65: dust-proof and splash water protected for toughest industrial use when required
- Uniform communication protocol for condition monitoring across multiple devices: allowing user-specific signal processing
- Consistent graphical user interface WYSIWYG: realistic display of print contents
- Integrated webserver: enables print system operation via PC, tablets or smartphone
- Digital I/O interface: freely programmable (e.g. information on filling level)
- 2 print head connection strings: up to 512 nozzles selectable
  - Example 1: 16 print heads with 32 nozzles each (512 nozzles fully used)
  - Example 2: 8 print heads with 16 nozzles each (128 nozzles of 512 used)
- Product sensor and shaft encoder port



Rear view REA JET DOD 2.0 Control Terminal – port panel

## Always good to go! Industrial ink and primer supply units

REA JET offers various ink and primer supplies - the right solution for every customer requirement.



REA JET Ink- and Primer Supply Unit TV-PP-4.5 liters (AFS) with automatic flushing system

- Highest chemical resistance
- Best mixing performance for inks and primers
- Avoidance of sedimentation
- Greater range through higher filling capacity
- Automatic flushing system
- Automatic or manual operation
- Comprehensive accessories
- Over 500 inks and primers

## REA JET TITAN Plattform: A single operating concept for all REA JET technologies

Unlimited operation - Now, everything is easier



### Glove Operation

Central push-turn jog-dial knob even for glove operation directly at the production line



### Touch Screen

Touch screen for operation directly at the production line



### WLAN Browser Operation

Browser operation through mobile devices (PC, tablet, smartphone) via WLAN / WebGui.



### PC Operation

Remote control from desktop computer or control stand



### Remote Maintenance

Remote maintenance and control available via VNC server



### Keyboard Entry

For regularly recurrent extensive text input at the production line - use of international USB keyboards possible



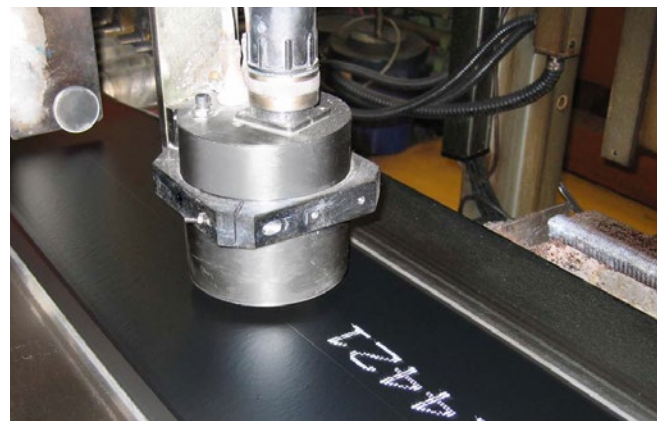
Coding and marking of pipes (steel, plastic etc.)



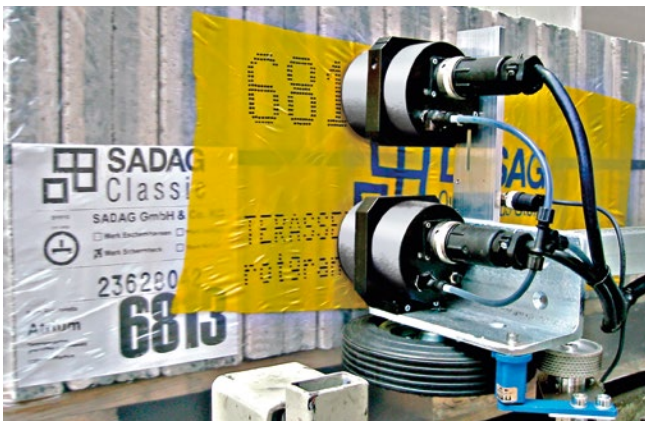
Marking of aluminum plates



Marking of paper bags



Marking of tread on raw rubber



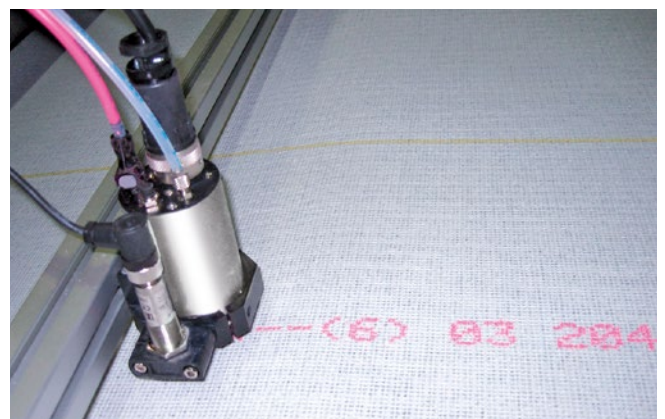
Coding and marking of shrink hoods



Marking of concrete pipes



Large marking of logos on stacked boards



Coding and marking of sheeting materials

# REA JET



## **REA Elektronik GmbH**

Teichwiesenstrasse 1

64367 Muehltal

Germany

T: +49 (0)6154 638-0

F: +49 (0)6154 638-195

E: [info@rea-jet.de](mailto:info@rea-jet.de)

[www.rea-jet.com](http://www.rea-jet.com)