

**NOVA** SWISS



**UP TO 900 BAR (13000 psi)**  
**COAXIAL SOLENOID VALVES**

# Coaxial Solenoid Valves

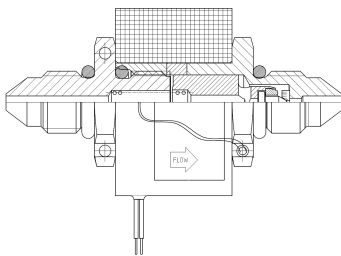
Nova Swiss extremely small and light coaxial solenoid valves are suitable for complex systems in severe environmental conditions.

## Solenoid Valve Features:

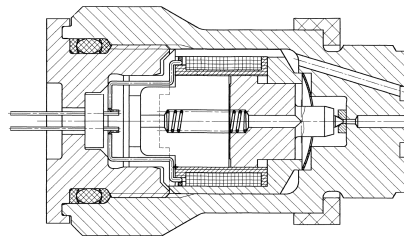
- Manufactured of non-corrosive material, capable to resist in all environmental conditions.
- 535.0178-24D is salty fog resistant.
- Particular design guarantees high gas tightness.
- Extremely small and light allowing use in a wide spectrum of applications.
- Normally closed with extremely quick opening time.
- 535.0178-24D tested according the military specification MIL 810 C/D.

## Applications:

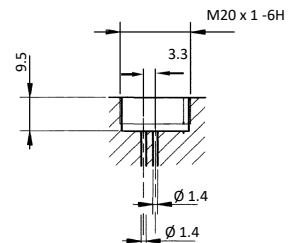
- Inert, pure - and ultra pure gas handling
- Aerospace
- Satellites
- Defence



535.0178-24D



535.0200-3



Connection 535.0200-3

Nova Part No.	535.0178-24D	535.0200-3
MAWP bar (psi):	500 (7250)	900 (13020)
Outside diameter mm (inch):	24 (0.94)	SW 27
Orifice mm (inch):	0.5 (0.02)	
Length mm (inch):	43.4 (1.71)	47.5 (1.87)
Weight g (oz):	52 (1.83)	160 (5.64)
Flow rate lt/min (cfm) argon @ 200 bar:	350 (12.36) argon @ 200 bar	3000 (105.9) argon @ 90 bar
Minimum flow continuous use lt/min (cfm):	15 (0.529) @ 20°C (68 F)	
Duration of actuation w/o flow:	-	3 sec. Max.
Helium leakage rate cm <sup>3</sup> /sec.:	10 <sup>-5</sup>	-
Working temperature °C (F):	-46/+71 (-51/160)	-20/+50 (-4/122)
Voltage VDC:	23-31	20-30
Resistance Ohm:	39-42	51-54
Power @ 28 VDC during max. 60 sec. Watt:	max. 20	
Response time opening msec. :	max. 20 (23 VDC/500 bar)	Max. 50 (24 VDC/900 bar)
Response time closing msec.:	max. 20	Max. 50
MTBF (-46/71°C — -41/160 F) hours:	5200	-
Max. no of cycles/min.:	-	30
Connection:	5/16" -24UNF-3A Connector to Hoke Gyrolok 1/8": 2AAN2-316	M20 x 1 6g
Gaseous medium:	N <sub>2</sub> , CO <sub>2</sub> , He, Ne, Ar, Kr, Xe	N <sub>2</sub> , Ar

## Accessories:

Nova Part No.	535.0178-24D	535.0200-3
Flat packing Ø 4:	-	5.1326.002
Flat packing Ø 13:	-	5.1326.001

**novaswiss.com**