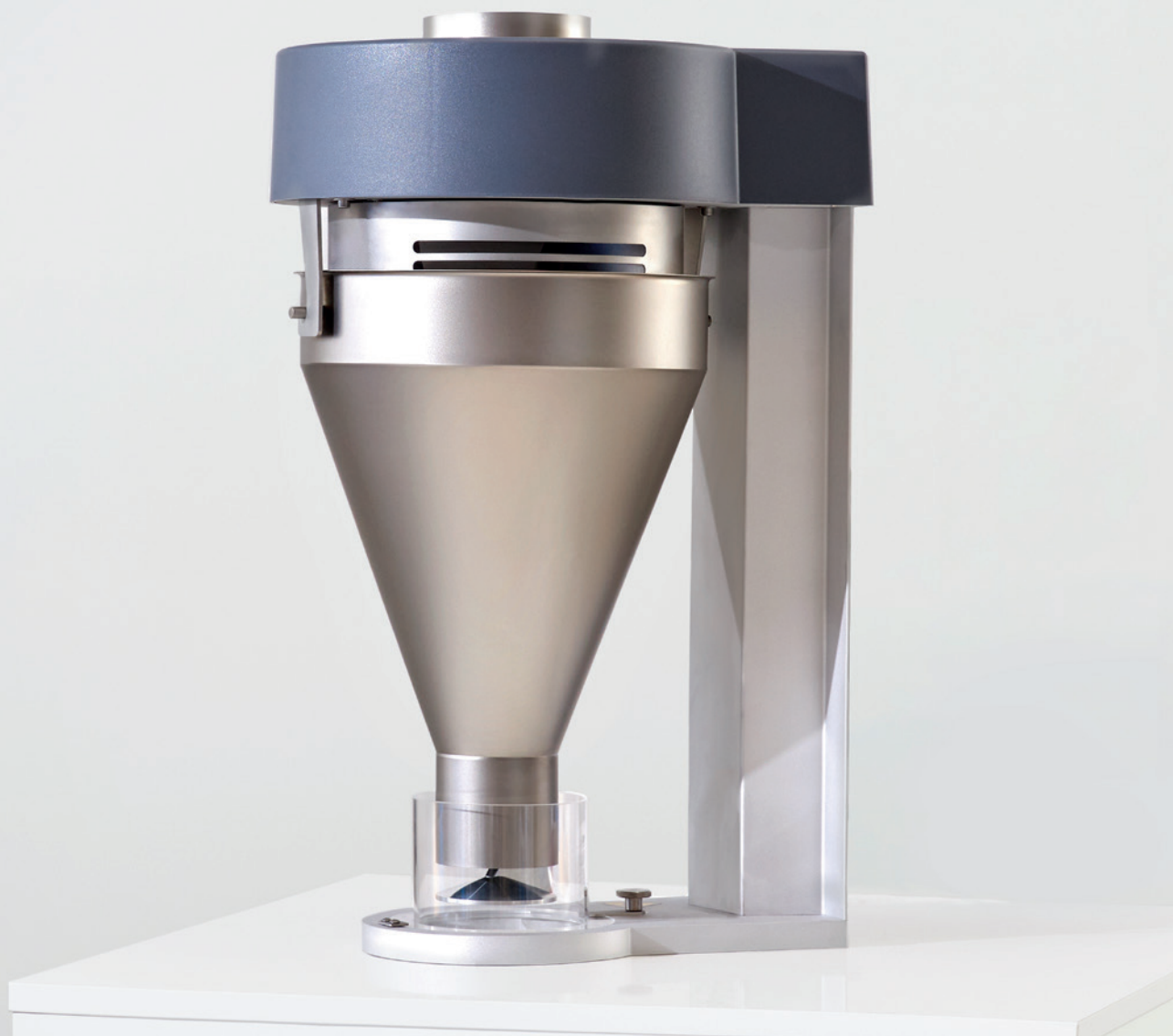


# SAVEOMAT G

GRAVIMETRIC DOSING SYSTEM



# SAVEOMAT G

GRAVIMETRIC DOSING SYSTEM

## GENERAL FEATURES

- Constant mass throughput with material savings of up to 5 %
- Constant weight per meter reduced to an absolute minimum
- Reduced start-up scrap
- Optimum material flow behaviour
- Dead zone free filling, weighing and dosing
- Optimum funnel geometry to achieve a perfect raw material flow
- Overload protection for load cells
- Suitable for complex recipes and special applications (up to 7 components possible)
- Ready for Industry 4.0 for comprehensive production data collection and analysis



MADE IN GERMANY

Type	Mass throughput [kg/h]	Construction height [mm/inch]	Storage hopper Contents [l] / Height [mm/inch]
G 20	0,2 – 20	490 (19.29")	15 / 375 (14.76")
G 60	0,8 – 60	580 (22.83")	15 / 375 (14.76")
G 200	2 – 200	635 (25.00")	15 / 375 (14.76")
G 350	10 – 350	760 (29.92")	40 / 635 (25.00")
G 500	10 – 500	845 (33.26")	40 / 635 (25.00")
G 750	20 – 750	980 (38.58")	60 / 845 (33.26")
G 1000	50 – 1000	1115 (43.89")	60 / 845 (33.26")
G 1400	50 – 1400	1330 (52.36")	95 / 1215 (47.83")
G 1600	100 – 1600	1195 (47.04")	on request
G 1800	100 – 1800	1255 (49.40")	on request
G 2000	100 – 2000	1315 (51.77")	on request