

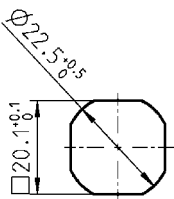
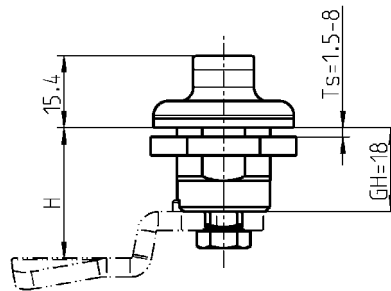
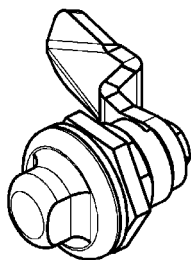
# Quarter turn stainless steel for hygienic areas

## PROGRAM 1000

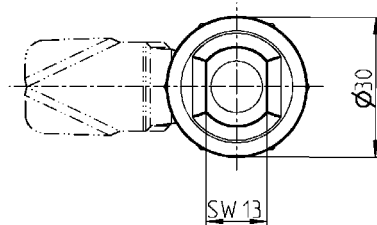
Quarter turn for hygienic areas for food and medical sector



Stainless steel quarter turns with flat gasket flush on the outside



Cut out



### Note:

The quarter turns for hygienic areas meet the hygiene requirement acc. to DIN EN 1672-2, DIN EN 14159 and EHEDG Dok.8.

The gaskets meet the requirements of the FDA 21 CFR 177.2600 and VO 1935/2004.

### Quarter turn for hygienic areas AISI 303 or 316, with seal

|                            |                |
|----------------------------|----------------|
| AISI 303 - for food sector | 1000-U838-02PF |
|----------------------------|----------------|

|  |              |
|--|--------------|
| AISI 316 - for food and medical sector | 1000-U838-02 |
|--|--------------|

### Key zinc die

|  |         |
|--|---------|
|  | 1004-53 |
|--|---------|

### Further parts see page

|                               |        |
|-------------------------------|--------|
| - Cam with catch<br>(GH = 18) | 1C-120 |
|-------------------------------|--------|