

Torque Meter – TME2



Fig.: 2TME500CN2

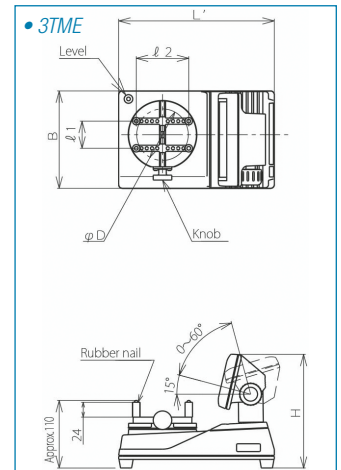
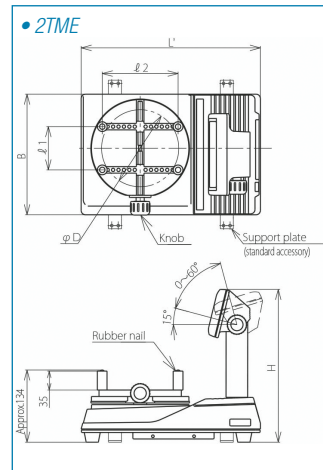
Digital Torque Meter with Data Processing Function

Suitable for measuring torque on bottle caps, also for spring force, starting torque test, strength test, and twisting test, etc.

The TME is equipped with 4 poles that can change positions according to the object's shape and hold it firmly during testing. As there is no need to fix the tester on the table with bolts, this gives greater portability.

Its angle-adjustable display with a large fluorescent indicator panel gives greater visibility. With the optional calibration equipment, the torque tester can be calibrated at the customer side.

Up to 99 data readings can be saved in the internal memory. Saved data can be transferred to PC or printer through RS232C output (equipped as standard). Analog output terminal (approx. ±4V) allows connection to recorder, etc.



- Bi-directional measuring – CW or CCW.
- Measuring modes: Peak, Run (Track).
- Accuracy $\pm 1\% + 1$ digit.
- Statistical Processing: sampling, max, min, means, variation range, standard deviation.
- Clamping device with 4 adjustables pylons.
- Angle-adjustable display with large indicator.
- Up to 99 readings can be saved in on-board memory.
- RS232C compliant output for serial data export.
- Operating environment: 0-40°C, non-condensing.
- Power supply: AC 100-240 Volt $\pm 10\%$ / 50-60 Hz (autom. shift).
- Power consumption: < 5 W.
- incl. AC adaptor BA-4, rubber pylons, support plate for fixing (w 2TME), op. manual, traceable calibration cert.

Optional Accs

INFO

- PC cable/printer cable D-Sub 9-Pin #383.
- Data Receiver Software.*
- Thermal line dot printer #EPP16M3.
- paper roll #1408.
- Li-Po battery #BP-100-4.
- Calibration Kit #TMTCL.
- Models for english (ozf-in/lbf-in) or metric (gf-cm/kgf-cm) units on request.



Fig.: EPP16M3



Fig.: BA-4

3TME

Model (SI)	Item No.	Torque Range cN·m	Grad. cN·m	L1 mm	L2 mm	Wght. kg
3TME10CN2	T251300	2 - 10	0,01	14-90	17-85	3,5
3TME20CN2	T251303	4 - 20	0,02	14-90	17-85	3,5
3TME50CN2	T251306	10 - 50	0,05	14-90	17-85	3,5
3TME100CN2	T251309	20 - 100	0,1	14-90	17-85	3,5

2TME

Model	Item No.	Torque Span cN·m	Grad. cN·m	L1 mm	L2 mm	Wght. kg
2TME200CN2	T251312	40 - 200	0,2	20-154	20-140	12
2TME500CN2	T251315	100 - 500	0,5	20-154	20-140	12
2TME1000CN2	T251318	200 - 1000	1	20-154	20-140	12
2TME2000CN2	T251321	400 - 2000	2	20-154	20-140	12



Further information available 24/7 on our website.

* Excel Receiver software is a data input tool for Excel® data management. It can be downloaded for free. Note: Excel® is a registered trademark of the Microsoft Corporation.