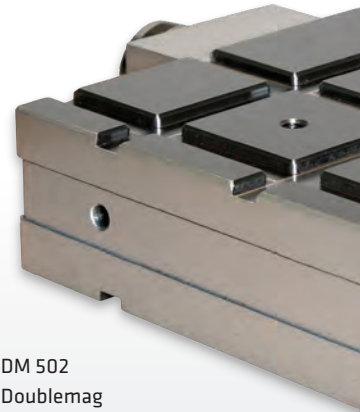


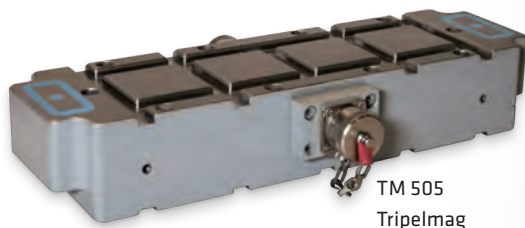
Doublemag | Triplemag

small Electropermanent Magnetic Chucks

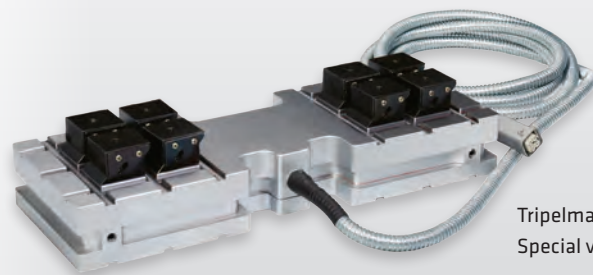
These small electropermanent magnetic clamping plates (Mini Magnaslots) both clamp the workpiece and themselves to the machine table. Mechanical clamping or fix clamping is not required. Several Mini Magnaslots combined with each other are a favourable alternative to large magnetic clamping plates or even magnetic clamping tables. The Triplemags have additional positioning magnets which can be clamped at the desired position on the machine table without the workpiece having to be clamped. As a rule, the small magnetic clamping plates are provided with 2 connection sockets. The magnetic table then comprises the Mini Magnaslots, connecting cables, connection cables and controller.



DM 502
Doublemag



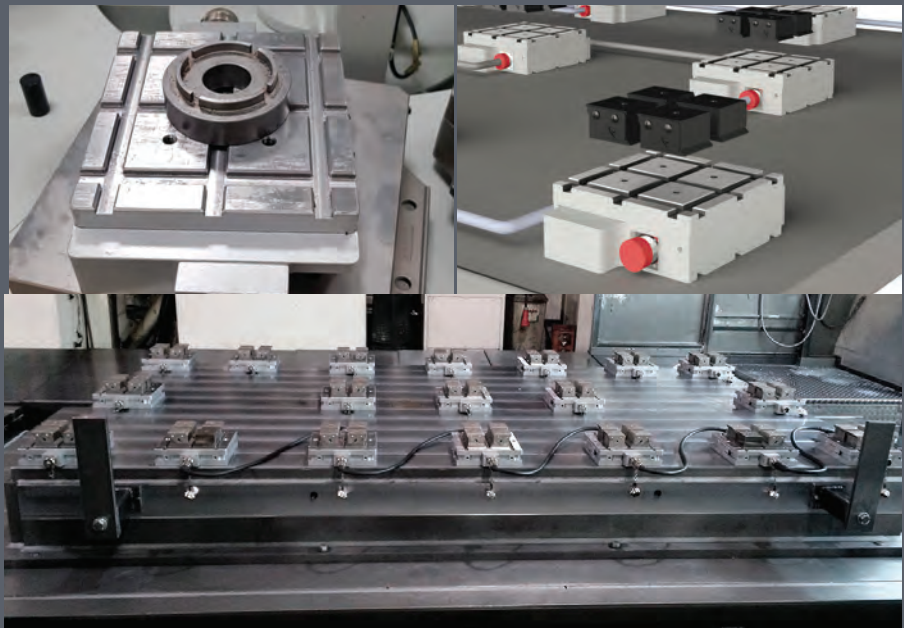
TM 505
Triplemag

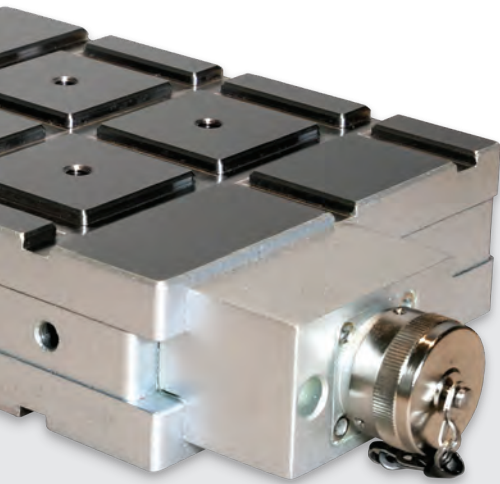


Triplemag
Special versions on request

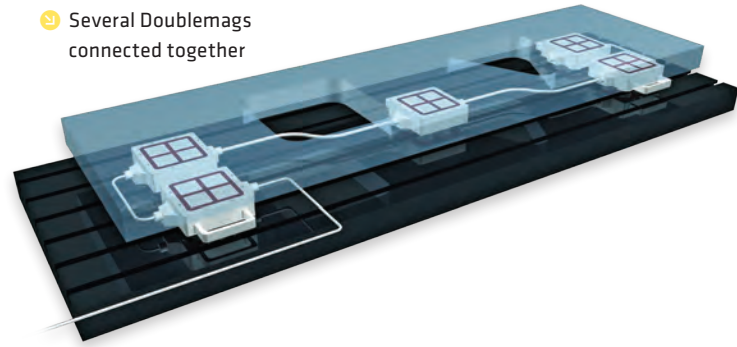
Application

- ▶ Clamping big or bulky workpieces for milling
- ▶ Clamping for edge cutting or deburring
- ▶ For simple and fast fixing of workpieces
- ▶ Also usable with fixed and movable pole extensions for uneven surfaces





Several Doublemags connected together



Professional advantages

- ▶ Drastic reduction of set-up times
- ▶ 5-side machining with simple and fast positioning and clamping
- ▶ Less stress, less vibrations, less torsions for better machining
- ▶ Flexible combination of multiple magnets to machine large or bulky workpieces
- ▶ Better accuracy-plane-parallelism 0,01/1000mm is reachable
- ▶ The advantage of fixed and mobile pole extensions for balancing uneven, bent, large workpieces

Features

- ⌚ Pole size 50 × 50 mm
- ⌚ Adhesive force ≥ 400 kg per pole
- ⌚ Full clamping force will only be achieved if the supporting table is ferromagnetic and at least 15 mm thick
- ⌚ Penetration depth of the magnetic field up to 12 mm
- ⌚ Patented solid top resists best to hot chips and coolants and cares also for heat dissipation

Options

- ⌚ Controllers and accessories -> see on page 20-21

Technical data

| | Dimensions [L×W×H] [mm] | Number of poles | Voltage [Volt] | Ampere [A] | Weight [kg] | No. |
|--------|----------------------------|-----------------|-------------------|---------------|----------------|-------|
| DM 502 | 180 x 180 x 55 | 2 x 4 | 400 | 2 | 12 | 52186 |
| TM 503 | 220 x 180 x 55 | 2 x 4 + 1 x 2 | 400 | 2 | 12 | 70604 |
| TM 505 | 340 x 100 x 55 | 2 x 4 + 1 x 2 | 400 | 2 | 13 | 70796 |