

# Slit Nozzles (Air Curtain)

SLNB series

For blowers

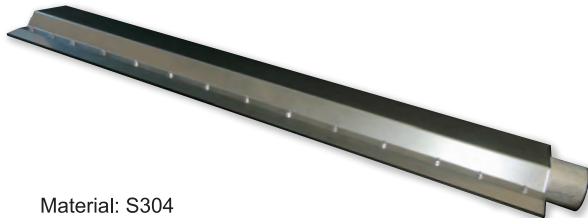
Stainless Steel

## FEATURES

- Pressure loss is minimal to enable high spray impact performance. Long thin slit with tapered nose is suitable for installation in a narrow space such as between support rolls.
- Drastic energy saving is achieved by switching from compressor-using type.

Flat Type

【Spray pattern】



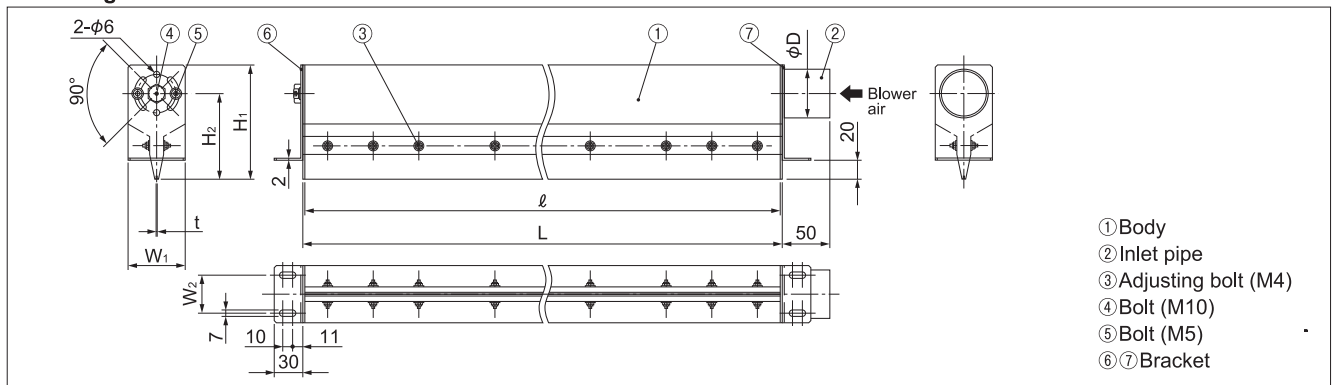
Material: S304

## Dimensions and mass

Air inlet type	Slit length $\ell$ (mm)	Slit opening $t$ (mm)	Outer dimensions (mm)						Mass (kg)
			L	H <sub>1</sub>	H <sub>2</sub>	W <sub>1</sub>	W <sub>2</sub>	$\phi$ D	
D38	400	0.5	404	105	80	50	30	38.0	1.9
	600		2.7						
	800		3.5						
	1,000		4.3						
D50	1,200	1.0	1,204	120	90	60	40	50.8	5.9
D38	400		404	105	80	50	30	38.0	1.9
	600		604	120	90	60	40	50.8	3.2
D50	800		804	120	90	60	40	50.8	4.1
	1,000	1,004	140	102.5	75	50	63.5	6.2	
D65	1,200	1,204						7.4	

Appearance and dimensions may differ slightly depending on materials and nozzle codes.

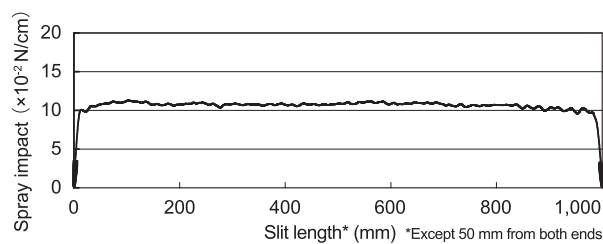
## Drawing



## Spray impact distribution

[Nozzle: SLNB1000×0.1]

Slit opening: 1.0 mm
Slit length: 1,000 mm
Spray height: 5 mm
Air pressure: 5.2 kPa
Air consumption: 5,000 $\ell$ /min, Normal



## Spray impact

Max. value:  $11.29 \times 10^{-2}$  N/cm  
 Min. value:  $9.69 \times 10^{-2}$  N/cm  
 Median value:  $10.49 \times 10^{-2}$  N/cm  
 Deviation from median:  $\pm 7.6\%$

Slit length (mm)	Slit opening (mm)	Air consumption ( $\text{m}^3/\text{min}$ , Normal)*					
		5 kPa	10 kPa	15 kPa	20 kPa	25 kPa	30 kPa
400	0.5	0.97	1.60	2.01	2.58	3.01	3.40
600		1.45	2.39	3.18	3.87	4.51	5.10
800		1.94	3.19	4.24	5.17	6.01	6.80
1000		2.42	3.99	5.30	6.46	7.52	8.50
1200		2.91	4.79	6.36	7.75	9.02	10.20
400	1.0	1.91	2.81	3.52	4.13	4.67	5.16
600		2.87	4.22	5.28	6.19	7.00	7.74
800		3.82	5.62	7.04	8.23	9.34	10.33
1000		4.78	7.03	8.80	10.32	11.67	12.91
1200		5.73	8.43	10.56	12.39	14.01	15.49

\*The above air consumption is for reference only and subject to design changes.

## How to order

Please inquire or order for a specific nozzle using this coding system.

<Example> D65 SLNB 1200×1.0 S304-S-A

<b>D65</b>	<b>SLNB</b>	<b>1200</b>	<b>×</b>	<b>1.0</b>	<b>S304-S-A</b>
Air inlet type		Slit length		Slit opening	
■ D38		■ 400 ■ 1000		■ 0.5	
■ D50		■ 600 ■ 1200		■ 1.5	
■ D65		■ 800			