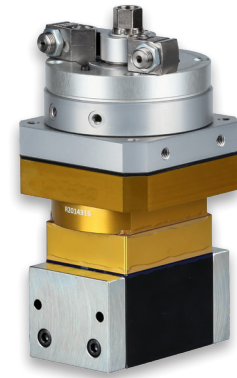
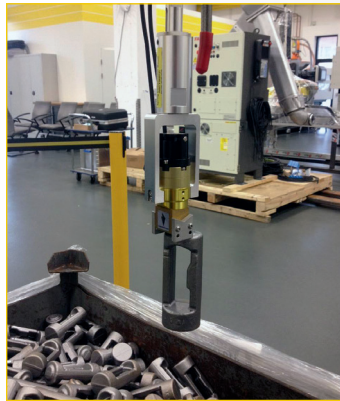


# AR Series

## Magnetic Gripper for Automation

The AR permanent magnets are well controlled by air pressure. The rectangular housing is designed for an easy exchange of pole shoes. Special pole shoes are needed for irregular, uneven workpiece forms. The magnets are very flexible because one of 3 possible magnet areas can be used. This magnet is best choice when no flat area exists.



AR 50 Classic



AR 40 Naams

### Application

- + For round and flat workpieces
- + For workpieces with irregular surfaces
- + Suitable for automation, lifting operations, robotic technology, welding and clamping technology

### Features

- ☺ Each AR device is equipped with a set of flat or tube / round pole shoes
- ☺ The exchangeable pole shoes can be adapted individually to the workpiece
- ☺ Very low residual magnetism
- ☺ Universal in application
- ☺ Very light and very heavy workpieces can be grabbed

### Technical data

	Hold surface [Ø or W x H] [mm]	Load SWL 4:1 Fh [kg]	Min. thickness [mm]	Weight [kg]	No.
AR 20	34	7	3	0,4	66675
AR 30	44	15	3,5	0,7	67555
AR 40	55 x 42	43	9,5	1,9	68803
AR 50	64 x 52	62	9,5	2,8	68771
AR 70	92 x 72	110	12,7	6,8	66567
AR 110	150 x 114	356	38,1	28,4	62329