



CONTINUOUS  
DYNAMIC  
BRUSHING.



## SOUPLEX or DEL/FLEX brush belts



Quality	Reference	Dimension (mm)	Mini pulley ø (mm)	Height of bristles	Number of rows	Pitch of bristles (mm)	Cross section of bristle (mm)	Nylon bristles
DEL/FLEX	DFVR13BR	13 x 8 (A)	120	27	1	8	40/100	
SOUPLEX	SXVM17BR	17 x 11 (B)	180	60	2	8	40/100	
SOUPLEX	SXVM22BR	22 x 14 (C)	240	60	3	8	40/100	

### Special brush belts :

- Height
- cross section
- pitch
- special brushing

*On demand.*



# V belts with flights



High flights.



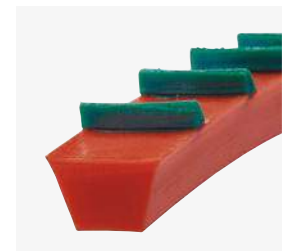
Flexible flights.



Flat welded triangles, for a minimum contact with the transported products.



Tough welded flights (several heights possible).



SF7 flights.



special profiles



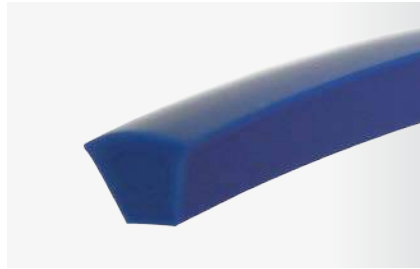
**ATC 63**

Smooth or embossed surface,  
25x2.3mm with guide 4x2.5mm.  
Colour : green, white or blue  
Hardness : 90 ShA



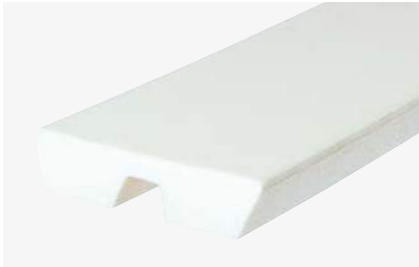
**ATC 12**

Smooth or embossed surface,  
12x2.1mm with guide 4.8x3mm.  
Colour : green, white or blue  
Hardness : 90 ShA

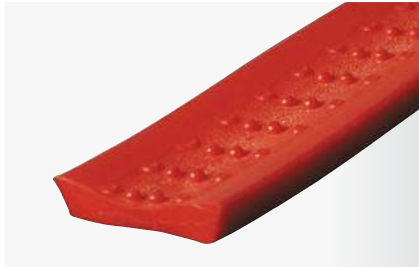


**SXVB08DO**

V belt,  
SOUPLEX blue 8 x 6.5mm with dome.  
Hardness : 87 ShA

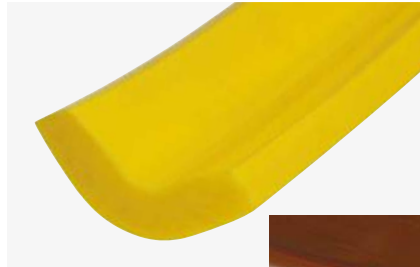


Double V belt,  
30 x 8mm.  
Hardness : 85 or 90 ShA



**E238**

Corn belt, smooth or embossed,  
32 x 28 x 8mm.  
Hardness : 90 ShA



**U shape**

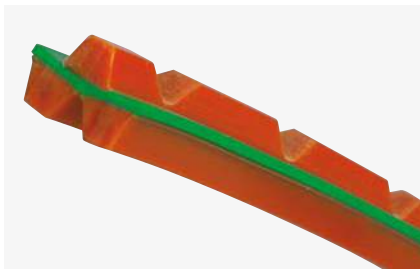
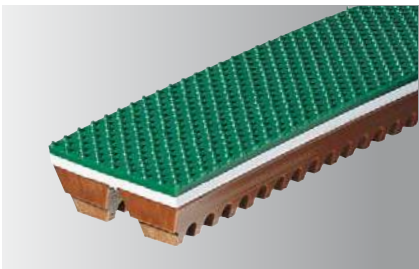
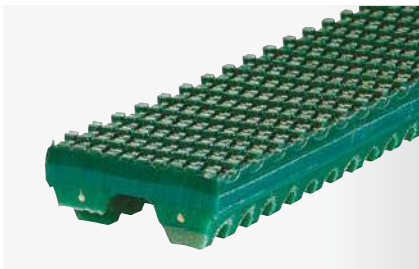
Covering profiles for  
wheels of steel wire saws  
Hardness : 85 ShA



multiples V belts



Cross section,width, thickness, lengths and hardness on demand.



Other coatings.



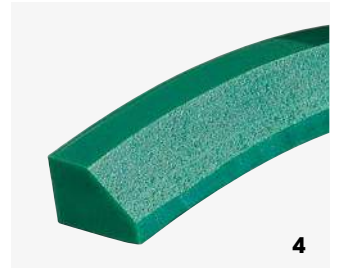
1  
Asymmetric ridge-top V belt.



2  
Machined ridge-top V belt.



3  
Machined V belt, to make it thinner and more flexible.



4  
Special machined profiles on demand.



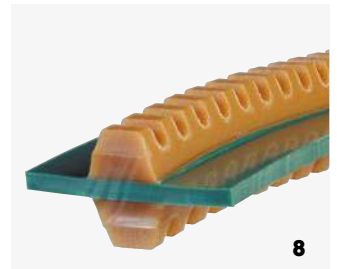
5  
V belt with rectangular groove.



6  
Rectangular belt with V groove.



7  
V belt with machined surface.



8  
DEL/FLEX flat belt with two opposite V guides for alternate operation.



9  
V belt with machined V groove (several depth possible).



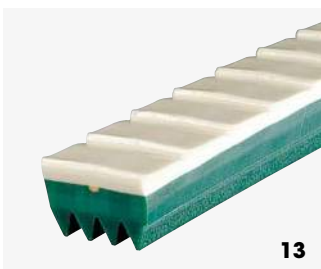
10  
Dome-shaped V belt.



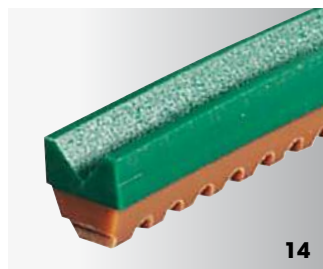
11  
V belt with round groove (several depth possible).



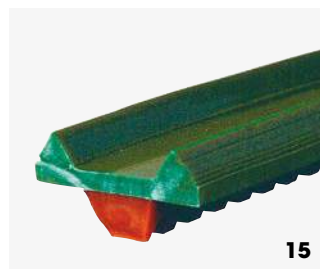
12  
V belt machined on demand.



13  
Special belt with sawtooth surface and machined POLY-V bottom grooves.



14  
V belt with V shape machine surface.



15  
V belt with welded surface and V hold-in edges.



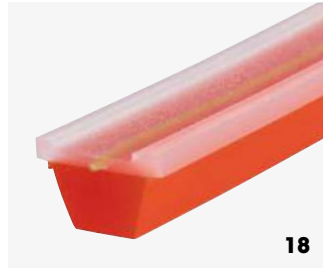
16  
V belt with welded surface and round hold-in edges.





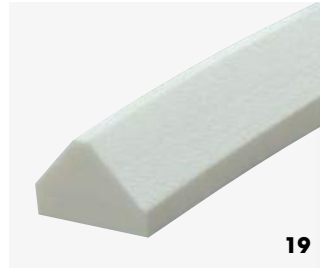
17

V belt with welded half round belt.



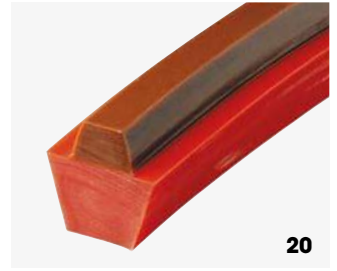
18

V belt with machined surface and aramid reinforcement.



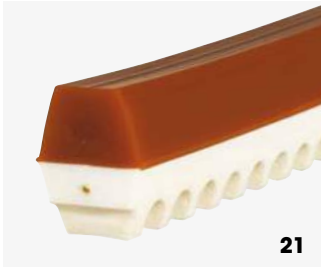
19

Asymmetric triangle belt.



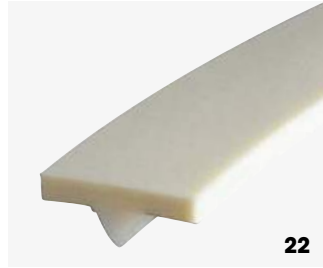
20

Hexagonal asymmetric SOUPLEX belt.



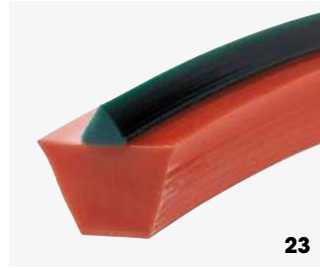
21

Cogged hexagonal belt.



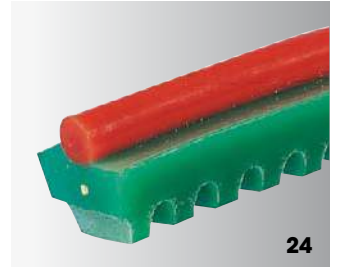
22

Flat belt with SR5 guide welded apex down.



23

V belt with welded SF7 ridge.



24

Round belt welded on top of a V belt.



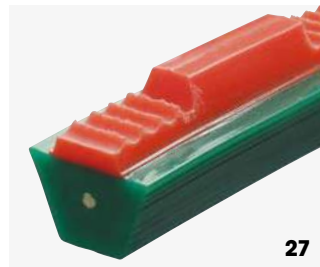
25

Rectified belt for mobile moulding.



26

V belt with surface and machined hold-in edges.



27

Hexagonal asymmetric belt with special cogging.



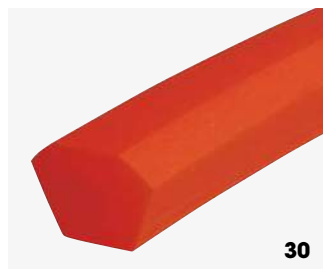
28

Round belt welded on the small base of a V belt.



29

V belt with round edges.



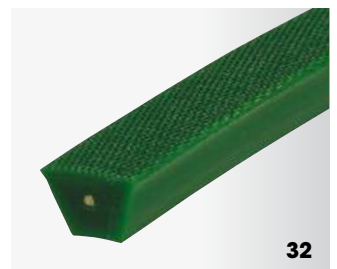
30

Chamfered V belt.



31

V belt with out-of-center surface.



32

Embossed V belt.

