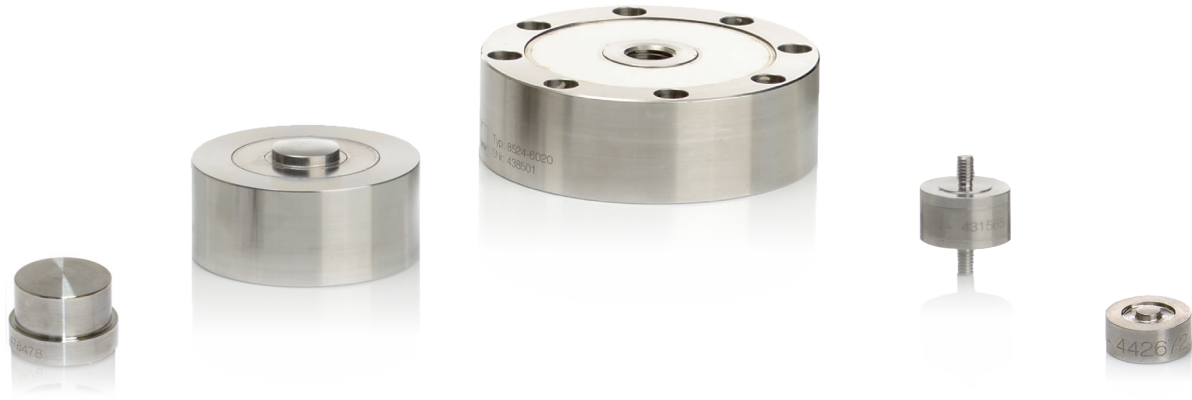


THE MEASUREMENT SOLUTION.



Features

- Measurement ranges from 0 ... 1 N to 0 ... 2 MN
- Linearity deviation up to 0.05 % F.S.
- Cable suitable for drag chain application
- Fully welded stainless steel construction
- Many load cycles up to 10^9

Options

- Internal amplifier
- Protection class IP68
- Overload stops available
- Versions for use in vacuum
- Standardized output signal; burster TEDS

Accessories

- Load centering plates
- Load insertion button
- Adapter parts
- Road end bearings
- Connector plugs

Highlights

- Compensated temperature range from $-55\text{ }^{\circ}\text{C}$ up to $200\text{ }^{\circ}\text{C}$
- Particularly small and flat designs
- Insensitive to lateral forces
- Different cable lengths
- Customized designs can be realized

Calibration

- Factory calibration
- DAkkS accredited calibration (DKD)
- Recalibration
- Calibration in partial areas
- Calibration on-site

Evaluation electronics

- Amplifiers for 0 ... 10 V and 4 ... 20 mA
- Interfaces for USB and fieldbus
- Indicators
- Process monitoring

LOAD EXPERTS

FOR PRODUCTION, AUTOMATION, R&D
AND QUALITY ASSURANCE



www.burster.com