

- Up to 14.000 Hz Scanrate
- Resolution as low as 0.3 µm
- Special algorithms for glossy materials
- AOI in x and z possible
- Master-Slave configuration for multi-scanner-operation
- Software Developer Kit
- Free test software for feasibility tests



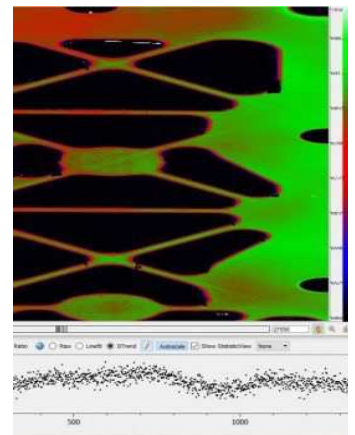
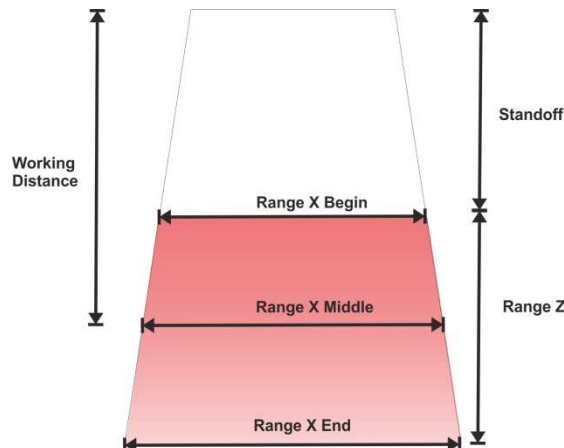
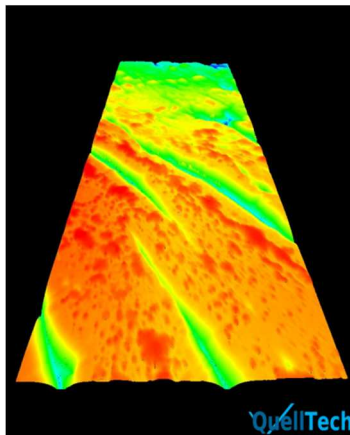
Scanner Type
 Range Z [mm]
 Range X Begin [mm]
 Range X Middle (nominal) [mm]
 Range X End [mm]
 Standoff z-Range Begin [mm]
 Working Distance z-Range Middle [mm]
 Resolution in x [µm]
 Resolution in z [µm]*

Q5									
	5	10	20	30	45	75	240	570	880
Range Z [mm]	5	10	20	30	45	75	240	572	879
Range X Begin [mm]	9,1	13,8	24,1	34,0	47,0	70,0	153,0	275,0	336,0
Range X Middle (nominal) [mm]	10,4	16,1	28,7	38,0	54,0	89,0	186,0	436,0	684,0
Range X End [mm]	11,6	18,4	33,2	42,0	62,0	108,0	219,0	609,0	1022,0
Standoff z-Range Begin [mm]	28,9	33,1	42,5	91,0	85,0	75,0	409,0	330,0	302,0
Working Distance z-Range Middle [mm]	31,4	38,1	52,5	106,0	107,5	112,5	529,0	616,0	741,5
Resolution in x [µm]	5,1	7,9	14,0	18,6	26,4	43,5	90,8	212,9	334,0
Resolution in z [µm]*	0,3	0,6	1,2	1,7	2,6	4,4	13,8	32,6	51,3

*numerical resolution

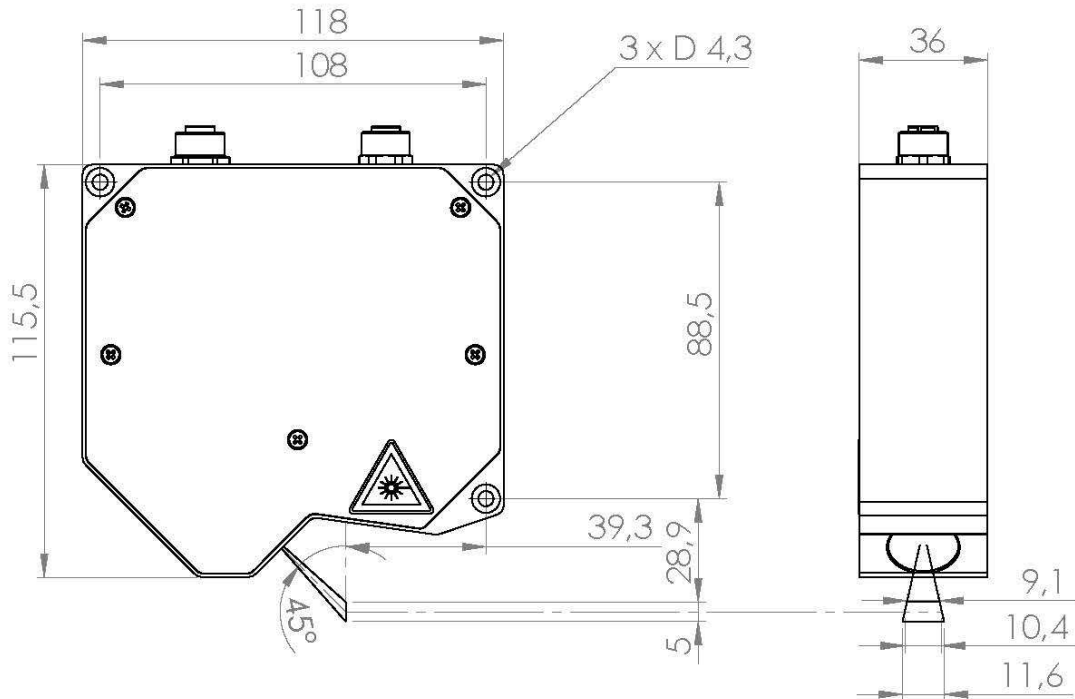
Scan Rate
 3D Algorithms
 possible optical characteristics
 Linearity
 Light source
 Ambient light max.
 Vibration/ Shock
 Storage Temperature
 Humidity
 Trigger
 Encoder input
 Supply power
 Storage Temperature
 Operating temperature
 Ethernet connector
 Supply connector
 Operating temperature
 Protection class
 Other features

Values	Options
up to 14000 Prof iles/s with AOI	Software ProfileCaptureT, SDK and EVT interface
COG, Finite Impulse Response (FIR), Treshold transparent, white to dark, shiny, highy reflective, polished, rough	
< 0,06 % of FS	
Laser, 650 nm, red	405/450 nm blue, 550 nm green
10 000 Lux	
Vibration 10 g 10 bis 150 Hz (DIN EN 60068-2-6)	
Shock 30 g 18 ms (DIN EN 60068-2-27)	
-20°C to 70°C	
< 90% RH	Software QS-View
Encoder based	
RS422	
24 V	
-20°C to 70°C	
0°C to +50°C	
M12, 4-pin, X-coded, female	
M12, 17-pin	
0°C to +50°C	
IP 64, optional IP 67	Cooling Module up to 400°C ambient temperature, Protection Window
Temperatur sensor built in for Laser Diode protection, synchronisation of multi scanner groups	



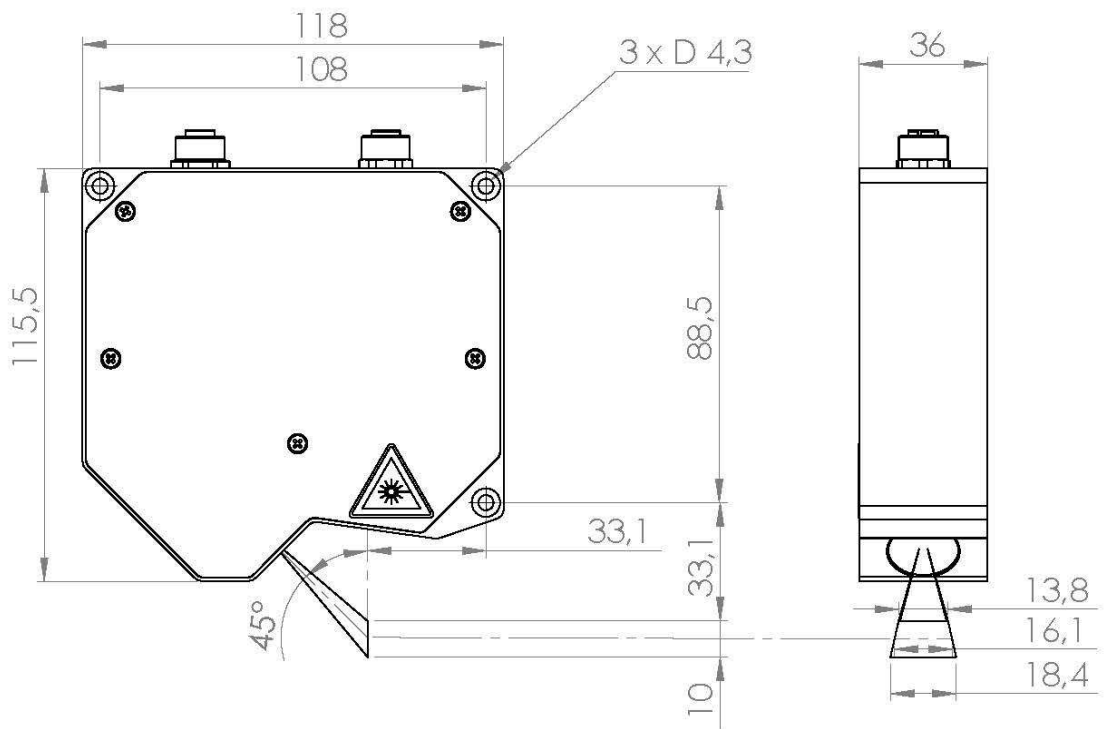
Technical Drawings

Q5-5



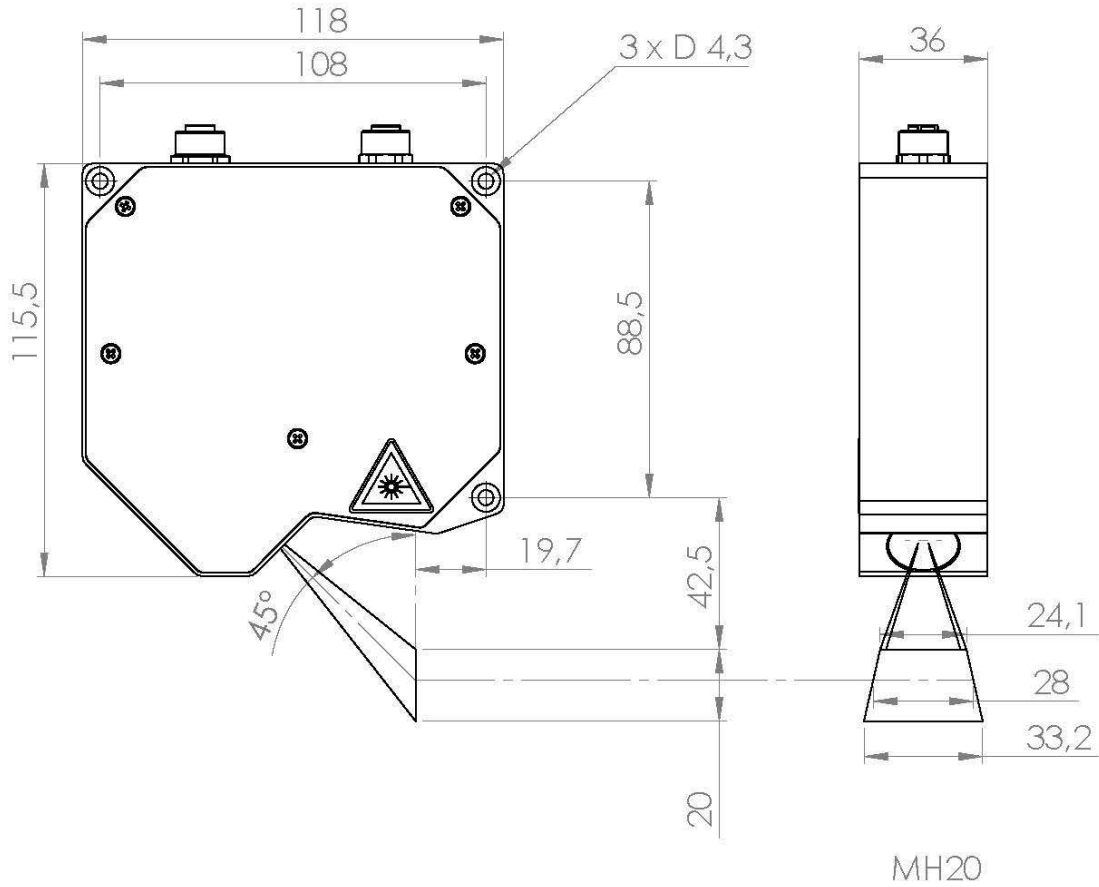
MH05

Q5-10

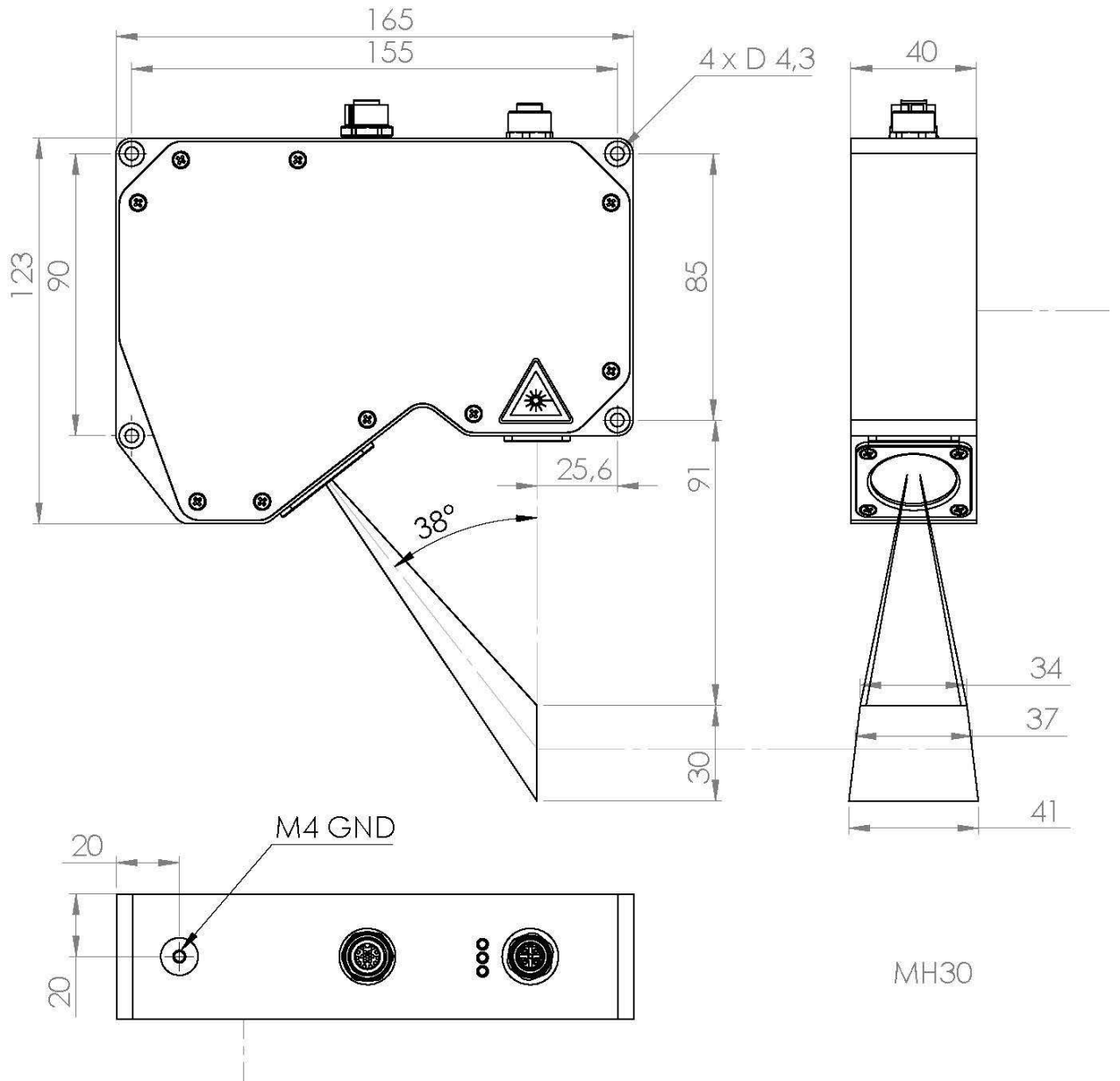


MH10

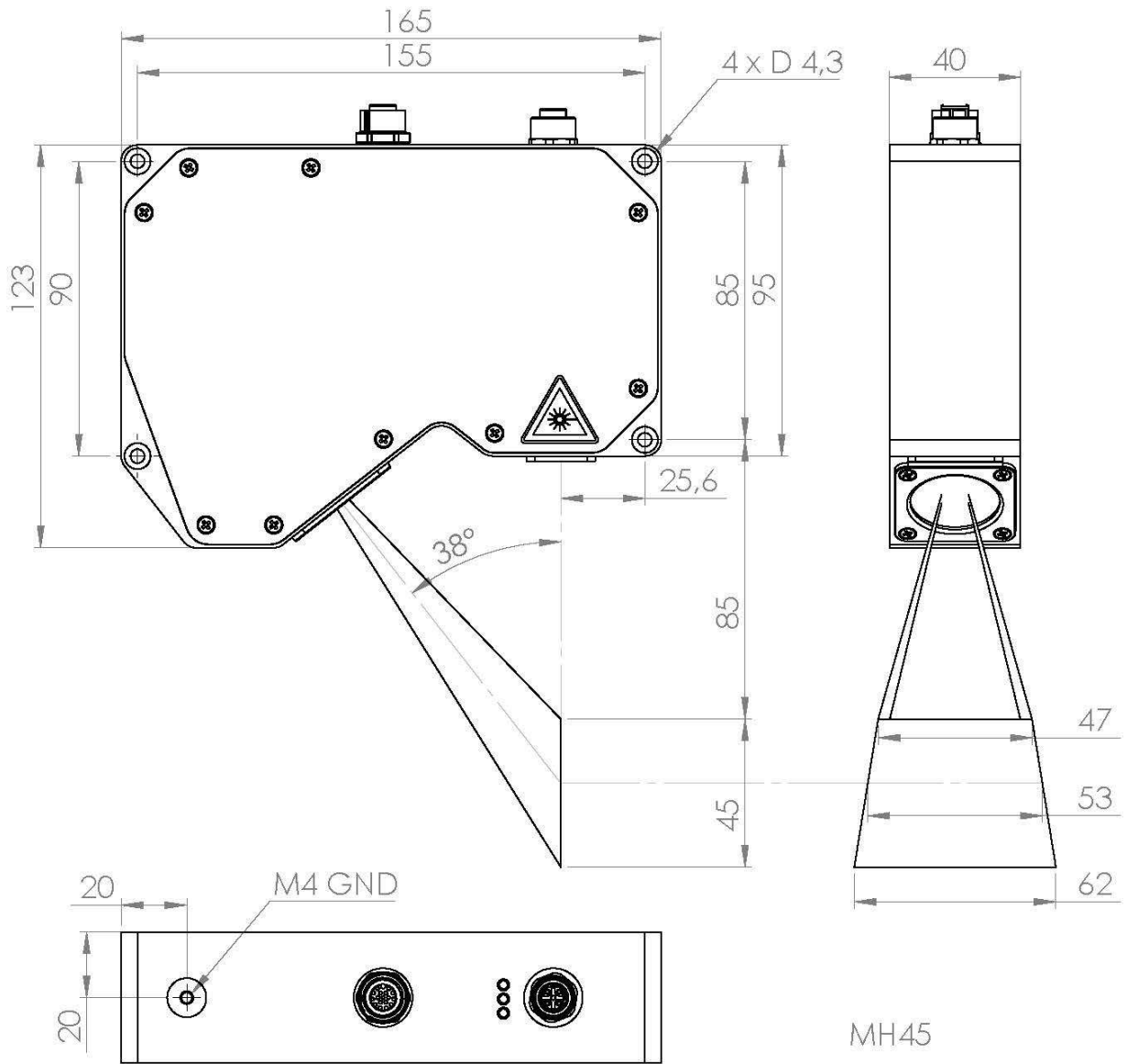
Q5-20



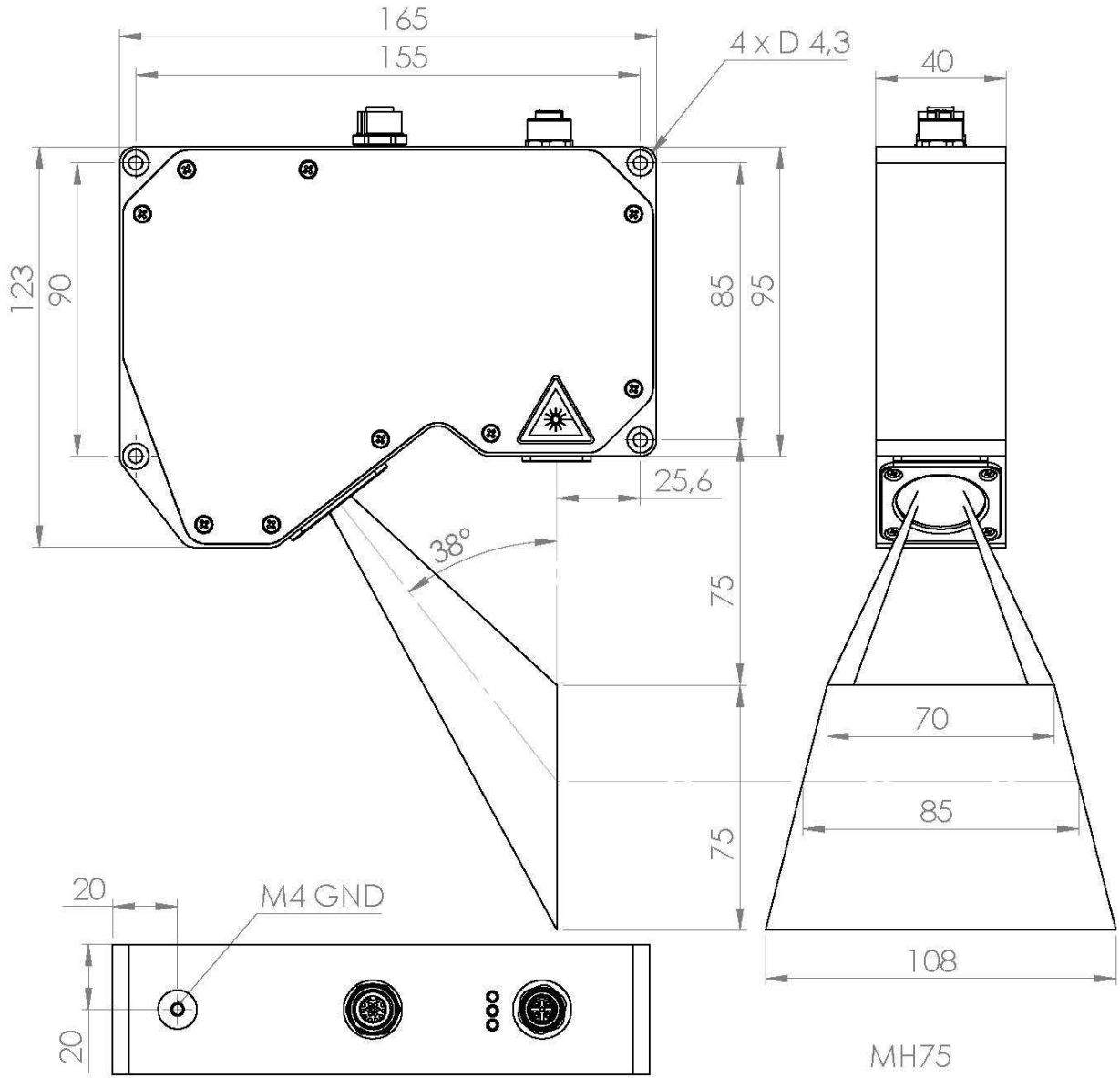
Q5-30



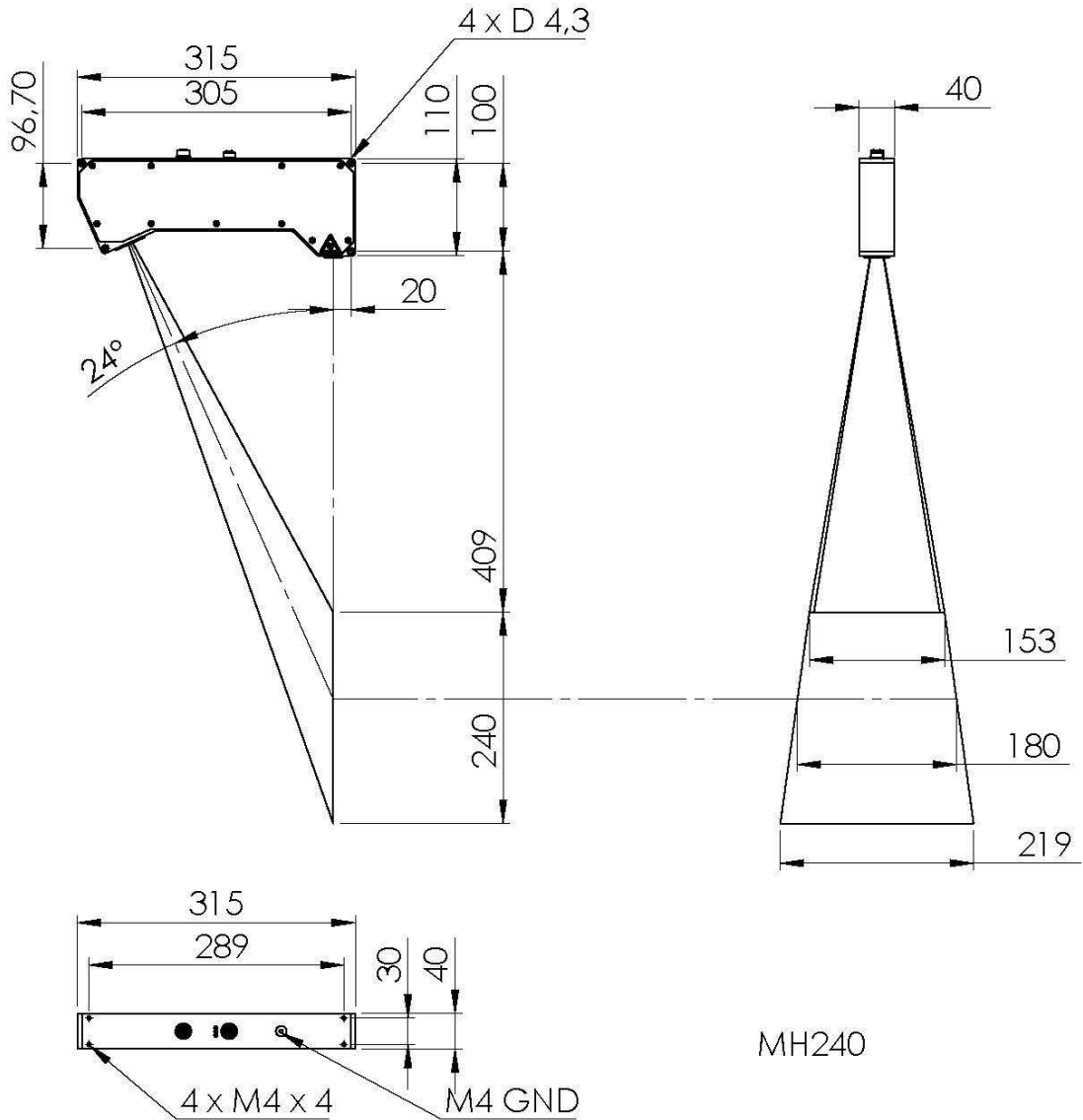
Q5-45



Q5-75

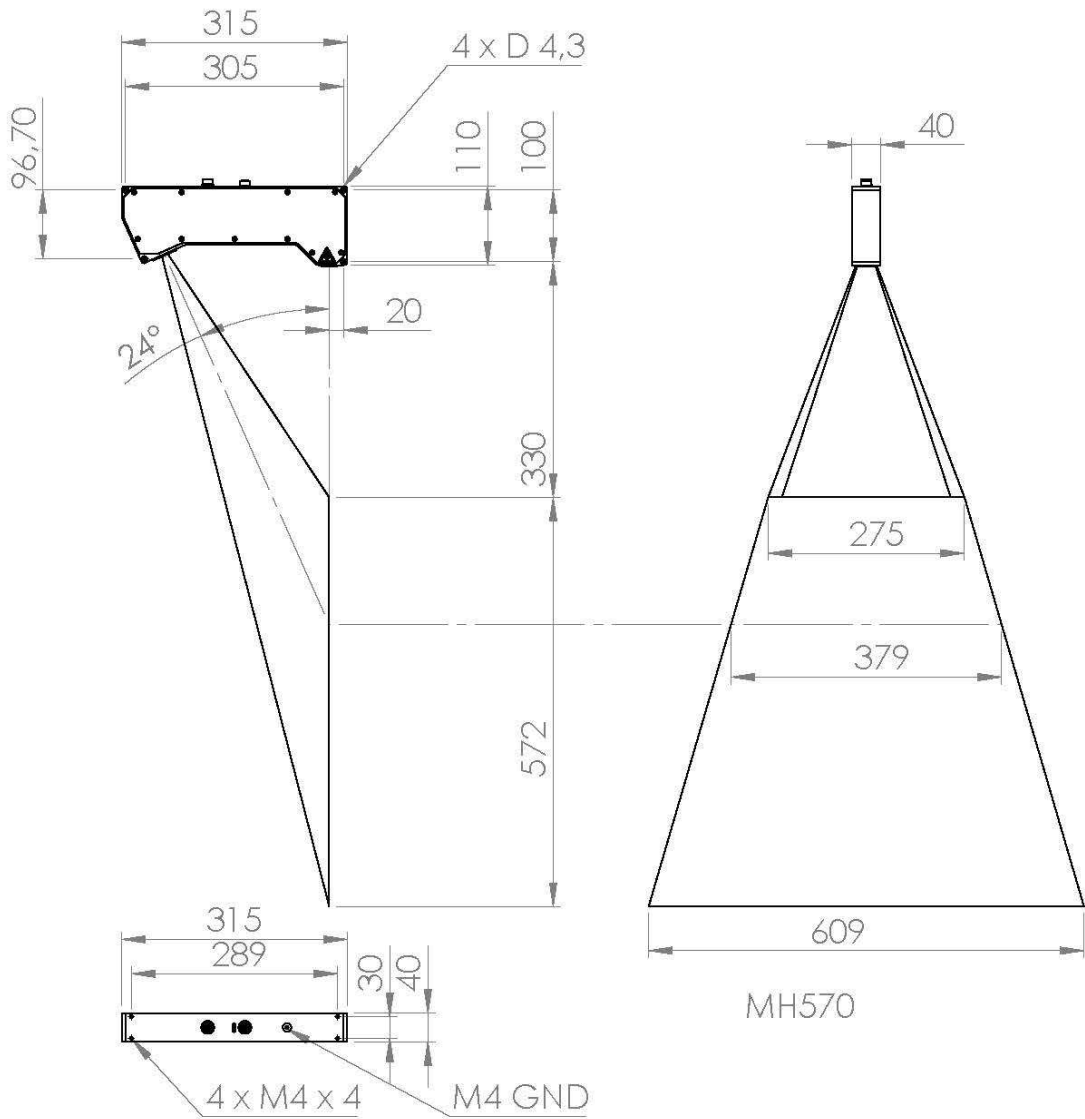


Q5-240



MH240

Q5-572



Q5-879

