

ANGLE HEAD FORTE WWX

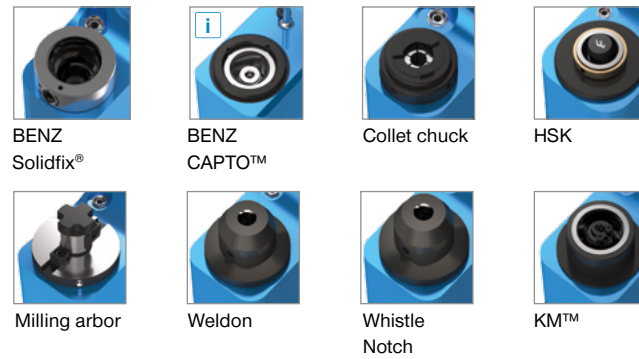
MODULAR DESIGN



ANGLE HEAD BODY (SIZE)

05 07 15 20

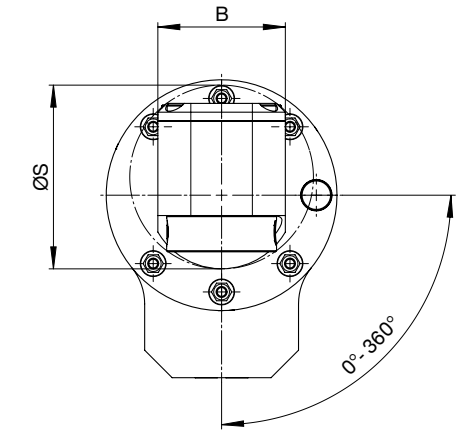
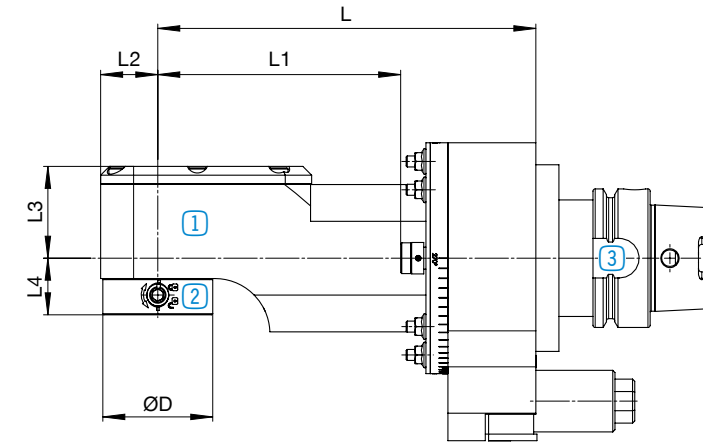
OUTPUT SPINDLE / CLAMPING SYSTEM



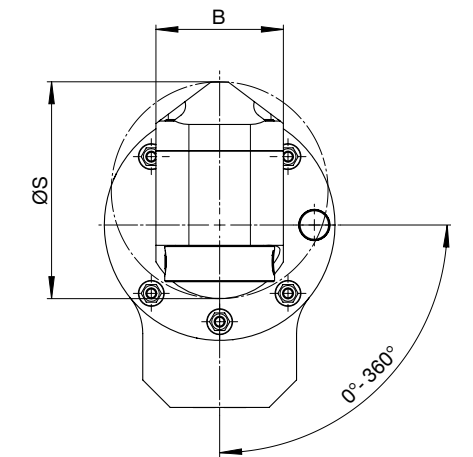
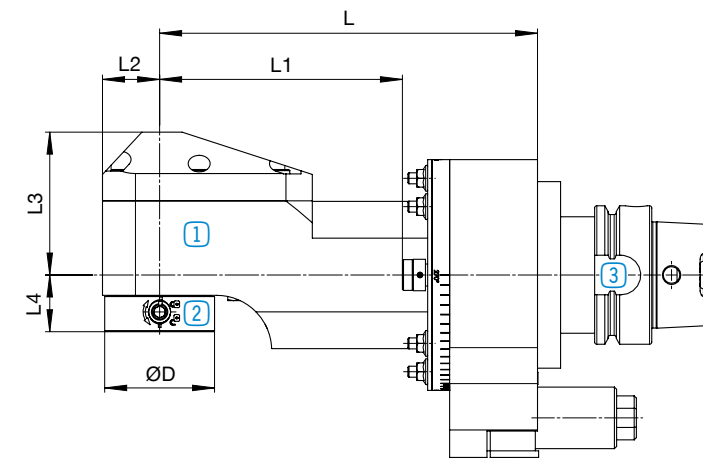
DRIVE CONE



Angle head without IC



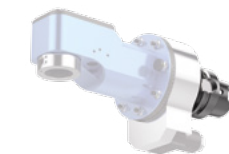
Angle head with IC



1 Angle head body
page 38



2 Output spindle /
clamping system
page 40



3 Drive cone
page 42

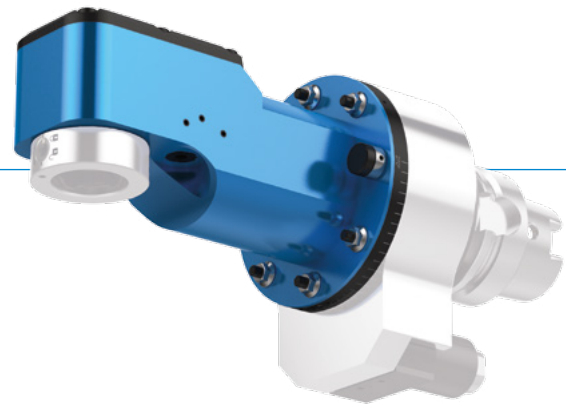
Specifications

Change the angle head	Machining	Number of output spindles	Axis angle	Coolant feed for cutting edge

Other dimensions for angle heads with BENZ CAPTO™ output spindle. Dimensions available on request.

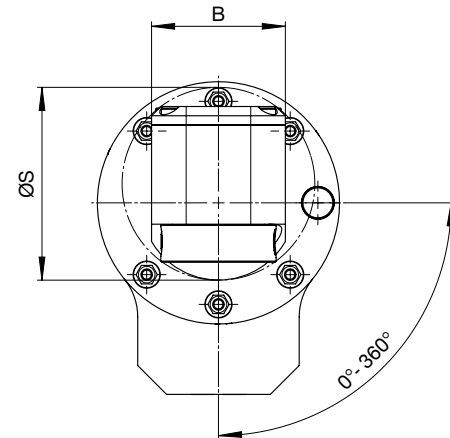
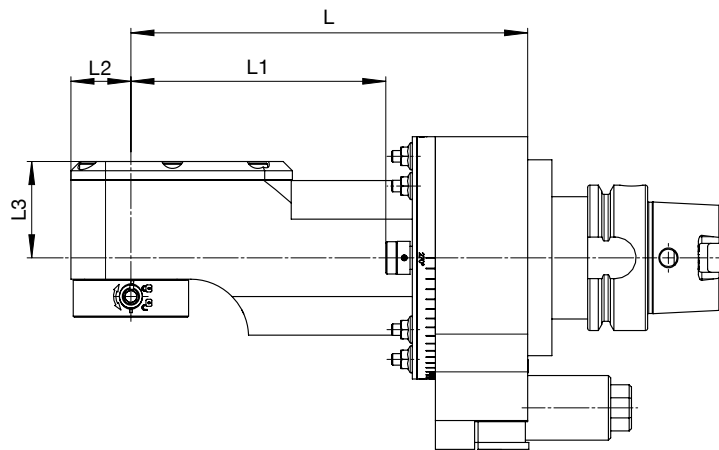
ANGLE HEAD FORTE WWX

▶ ANGLE HEAD BODY (SIZE)

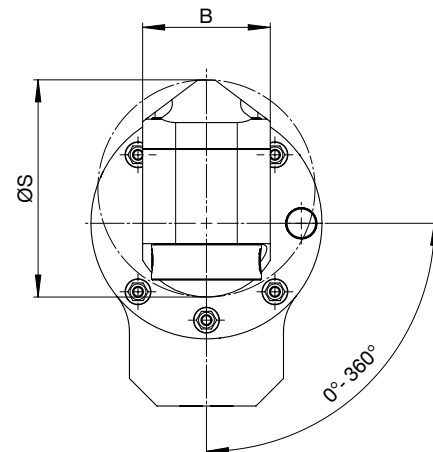
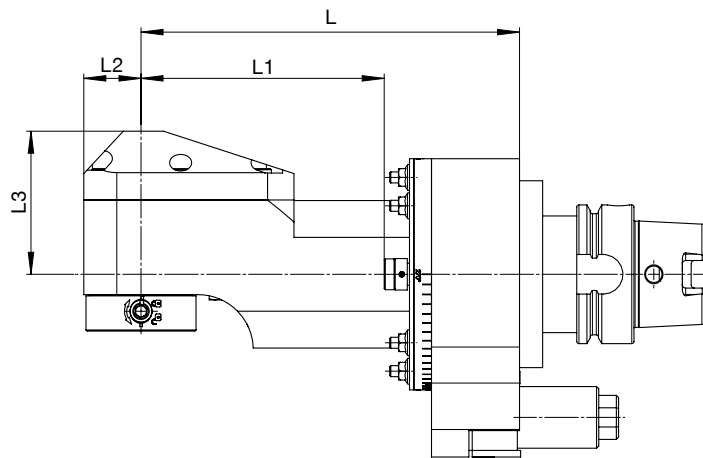


i More sizes on request.
Higher speeds are possible as an option.

▶ Angle head without IC



▶ Angle head with IC



Size 05

M_{max} = 30 Nm
 i = 1:1
 n_{max} = 8,000 rpm
 p_{max} = 100 bar

▶ Technical data

L1 [mm]	L2 [mm]	L3 [mm]	B [mm]	ØS [mm]	L [mm]	EC*	IC	EC+IC	Weight [kg]
63.5					125	- / ✓	- / ✓	✓	5
110.5	26	EC 42	IC 65	58	EC 84	IC 81	172	- / ✓	6
170.5					232	- / ✓	- / ✓	✓	7

Size 07

M_{max} = 70 Nm
 i = 1:1
 n_{max} = 6,000 rpm
 p_{max} = 100 bar

▶ Technical data

L1 [mm]	L2 [mm]	L3 [mm]	B [mm]	ØS [mm]	L [mm]	EC*	IC	EC+IC	Weight [kg]
93.5					155	- / ✓	- / ✓	✓	8.5
138.5	35	EC 55	IC 77	70	EC 109	IC 122	200	- / ✓	9.5
191.5					253	- / ✓	- / ✓	✓	10.5

Size 15

M_{max} = 150 Nm
 i = 1:1
 n_{max} = 4,000 rpm
 p_{max} = 100 bar

▶ Technical data

L1 [mm]	L2 [mm]	L3 [mm]	B [mm]	ØS [mm]	L [mm]	EC*	IC	EC+IC	Weight [kg]
125.5					195	- / ✓	- / ✓	✓	14
162.5	40	EC 66	IC 88.5	90	EC 129	IC 139	232	- / ✓	15
262.5					332	- / ✓	- / ✓	✓	17.5

Size 20

M_{max} = 230 Nm
 i = 1:1
 n_{max} = 3,000 rpm
 p_{max} = 100 bar

▶ Technical data

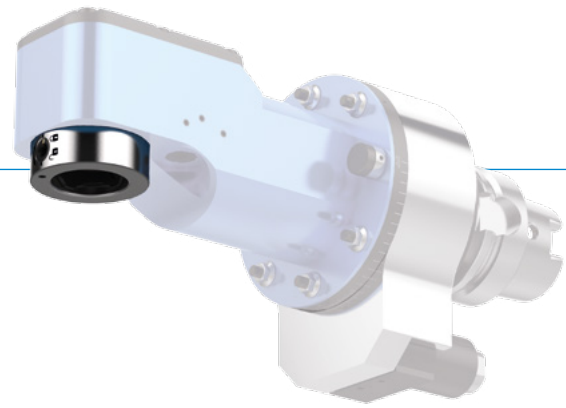
L1 [mm]	L2 [mm]	L3 [mm]	B [mm]	ØS [mm]	L [mm]	EC*	IC	EC+IC	Weight [kg]
135.5					200	- / ✓	- / ✓	✓	17
172.5	45	EC 65.5	IC 88.5	90	EC 130	IC 141	237	- / ✓	18
272.5					337	- / ✓	- / ✓	✓	21.5



*Optional: EC via spray nozzle

ANGLE HEAD FORTE WWX

▶ OUTPUT SPINDLE / CLAMPING SYSTEM



i Technical data for other output spindles / clamping systems on request:



Weldon

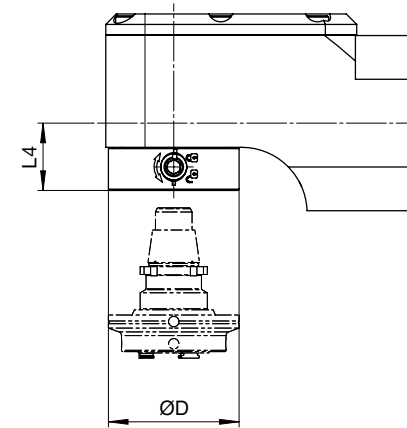


Whistle Notch



KM™

i We show you **preferable sizes** in the following tables. Smaller output spindles are possible at any time as an option.

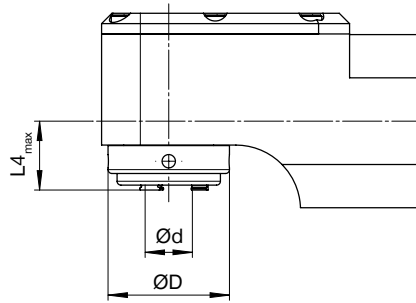


i For adapters and dimensions, see catalogue [BENZ Modular Tool Systems](#)



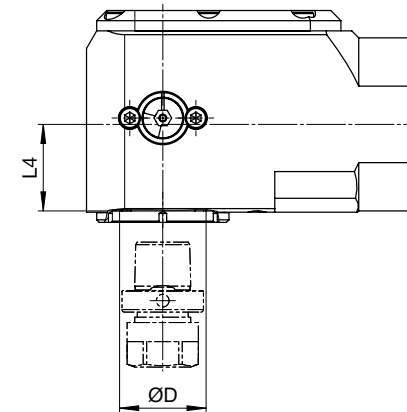
▶ Technical data

	Size	L4 [mm]		ØD [mm]
		EC	IC	
BENZ Solidfix®				
S3	05	25.75		50
S4	07	31		63
S5	15	35.5		75
	20	39.5		75



▶ Technical data

	Size	L4_max [mm]		ØD [mm]	Ød_max [mm]
		EC	IC		
Collet chuck					
ER25A	05	20.75	25.75	47	16
ER32A	07	23.9	28.9	55	20
ER40A	15	31	35.9	70	30
ER40A	20	31	41.6	75	30

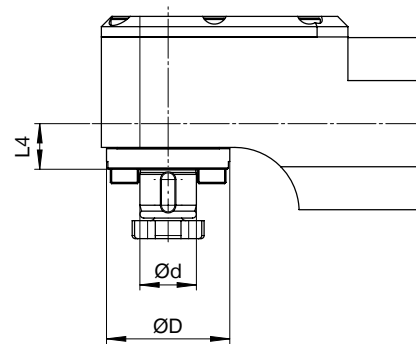


i For adapters and dimensions, see catalogue [BENZ Modular Tool Systems](#)



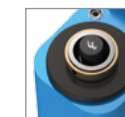
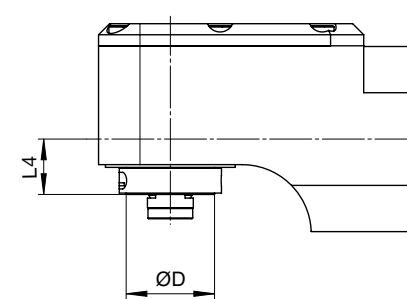
▶ Technical data

	Size	L4 [mm]		ØD [mm]
		EC	IC	
BENZ CAPTO™				
C3	05	34		32
C4	07	32		40
C5	15	39		50
C6	20	58		63



▶ Technical data

	Size	L4 [mm]		ØD [mm]	Ød [mm]
		EC	IC		
Milling arbor					
22	05	17.75		48	22
27	07	21.5		60	27
32	15	32.5		75	32
32	20	32.5		75	32

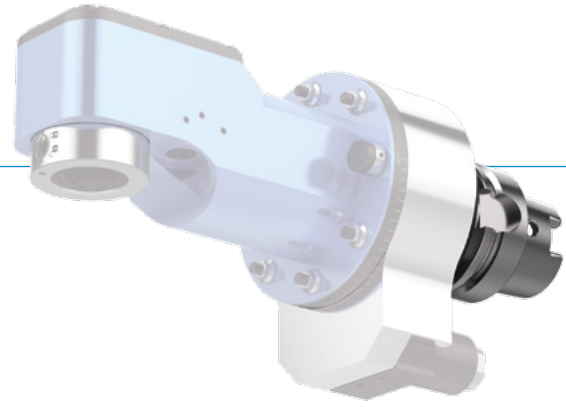


▶ Technical data

	Size	L4 [mm]		ØD [mm]
		EC	IC	
HSK				
HSK 32	05	20		32
HSK 40	07	24		40
HSK 50	15	35		50
HSK 63	15	42		63
HSK 63	20	40		63

ANGLE HEAD FORTE WWX

DRIVE CONE



i Technical data for other machine interfaces on request.

Type: Hollow shank taper



	Size			
	05	07	15	20
HSK DIN 69893	05	07	15	20
HSK 40	-	-	-	-
HSK 50	✓	-	-	-
HSK 63	✓	✓	-	-
HSK 80	✓	✓	✓	-
HSK 100	✓	✓	✓	✓



	Size			
	05	07	15	20
Coromant Capto®	05	07	15	20
C3	-	-	-	-
C4	✓	-	-	-
C5	✓	✓	✓	-
C6	✓	✓	✓	✓
C8	✓	✓	✓	✓

Type: Steep taper



	Size			
	05	07	15	20
SK DIN 69871	05	07	15	20
SK 40	✓	✓	-	-
SK 50	✓	✓	✓	✓



	Size			
	05	07	15	20
MAS BT	05	07	15	20
BT 40	✓	✓	-	-
BT 50	✓	✓	✓	✓



	Size			
	05	07	15	20
CAT	05	07	15	20
CAT 40	✓	✓	-	-
CAT 50	✓	✓	✓	✓



	Size			
	05	07	15	20
Kennametal™	05	07	15	20
KM 40	-	-	-	-
KM 50	✓	-	-	-
KM 63	✓	✓	-	-
KM 80	✓	✓	✓	-
KM 100	✓	✓	✓	✓