

### TECHNISCHE DATEN:

#### Aufbau

Reduktion	Polyamid PA6 GF30
Aussengewinde	metrisch, nach EN 60423
Innengewinde	metrisch, nach EN 60423

#### Eigenschaften

- zum Reduzieren einer Gewinde- oder Durchgangsbohrung auf eine kleinere Gewindegröße

Temperaturbereich	-40 °C / +100 °C
Schutzart	abhängig von der Kombination mit anderen Komponenten

### TECHNICAL DATA:

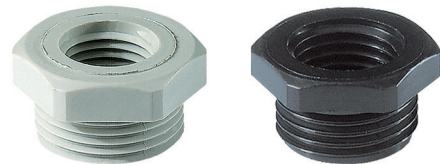
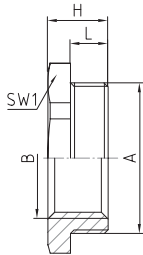
#### Configuration

Reduction	Polyamide PA6 GF30
External thread	metric, as per EN 60423
Internal thread	metric, as per EN 60423

#### Properties

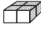


- reduction of threaded or clearance holes to smaller thread sizes

Temperature range	-40 °C / +100 °C
Protection grade	dependent on the combination with other components



### Merkmale

### Characteristics

A	B	L mm	SW1 mm	H mm		 RAL 7035 lichtgrau light grey Art.-Nr. / Part No.	 RAL 9005 tiefschwarz jet black Art.-Nr. / Part No.
M16x1,5	M12x1,5	8	24	12	100	M16M12 PA	M16M12 PA/SW
M20x1,5	M12x1,5	8	24	12	100	M20M12 PA	M20M12 PA/SW
M20x1,5	M16x1,5	8	24	12	100	M20M16 PA	M20M16 PA/SW
M25x1,5	M12x1,5	8	29	14	100	M25M12 PA	M25M12 PA/SW
M25x1,5	M16x1,5	8	29	14	100	M25M16 PA	M25M16 PA/SW
M25x1,5	M20x1,5	8	29	14	100	M25M20 PA	M25M20 PA/SW
M32x1,5	M12x1,5	10	36	16	50	M32M12 PA	M32M12 PA/SW
M32x1,5	M16x1,5	10	36	16	50	M32M16 PA	M32M16 PA/SW
M32x1,5	M20x1,5	10	36	16	50	M32M20 PA	M32M20 PA/SW
M32x1,5	M25x1,5	10	36	16	50	M32M25 PA	M32M25 PA/SW
M40x1,5	M16x1,5	10	46	16	50	M40M16 PA	M40M16 PA/SW
M40x1,5	M20x1,5	10	46	16	50	M40M20 PA	M40M20 PA/SW
M40x1,5	M25x1,5	10	46	16	50	M40M25 PA	M40M25 PA/SW
M40x1,5	M32x1,5	10	46	16	50	M40M32 PA	M40M32 PA/SW
M50x1,5	M20x1,5	12	55	18	25	M50M20 PA	M50M20 PA/SW
M50x1,5	M25x1,5	12	55	18	25	M50M25 PA	M50M25 PA/SW
M50x1,5	M32x1,5	12	55	18	25	M50M32 PA	M50M32 PA/SW
M50x1,5	M40x1,5	12	55	18	25	M50M40 PA	M50M40 PA/SW
M63x1,5	M25x1,5	12	68	18	25	M63M25 PA	M63M25 PA/SW
M63x1,5	M32x1,5	12	68	18	25	M63M32 PA	M63M32 PA/SW
M63x1,5	M40x1,5	12	68	18	25	M63M40 PA	M63M40 PA/SW
M63x1,5	M50x1,5	12	68	18	25	M63M50 PA	M63M50 PA/SW