

## Mortise Cylinder

017

*Cylinder Guard*



**FEATURES:**

- \* Parts of mortise cylinder
- \* Against either prying or twisting
- \* Iron material, matte chrome plated

018



018A



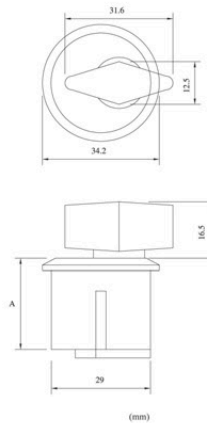
**FEATURES:**

- \* 5-pin tumbler cylinder
- \* Viro, Yale, Schlage keyway available
- \* # 018 Zinc housing, 1" × 1-5/32" dia.
- \* # 018A Brass housing, 1", 1-1/4", 1-1/8", 1-1/2" available
- \* With 2 brass keys
- \* AL/DU/BK finish available

019



019A



**FEATURES:**

- \* Thumbturn version
- \* #019 Zinc housing, 1" × 1-5/32" dia
- \* #019A Brass material, 1", 1-1/4", 1-1/8", 1-1/2"
- \* AL / DU / BK finish available

021



**FEATURES:**

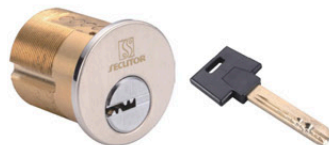
- \* Dummy type
- \* Zinc housing
- \* 1" × 1-5/32" dia.
- \* AL / DU / BK finish available

032



016

*Pin-within-a pin Cylinder*



**FEATURES:**

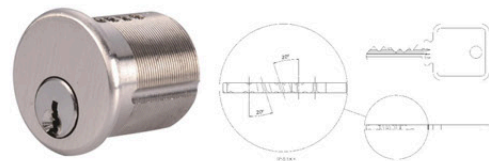
- \* 5-pin mechanism
- \* Brass housing
- \* 32.5mm dia. × 31mm
- \* With 2 normal keys

**FEATURES:**

- \* Pin-within-a pin, telescopic pin
- \* High precision pin tumbler system
- \* Brass material
- \* 6 × 2 pins mechanism
- \* Length: 1"-3"
- \* Surface: US26D, 32D, US3, US4, US15 available
- \* Keyed alike, MK system available
- \* With 3 nickel silver dimple keys

016.3

*Biaxial Pin Cylinder*



**FEATURES:**

- \* Brass material, 1-5/32" dia. × 33mm length
- \* Biaxial bottom pin & sidebar construction
- \* Key operates the cylinder only sidebar properly notches the bottom pins
- \* 5-pin tumbler mechanism, 6 depth per pin
- \* Biaxial bottom pins sit before or after the center of the biting cut
- \* Multi-angled bittings on the key
- \* Anti-drilling pins and steel crescents resist drilling
- \* Finish : US26, US26D, US04, US32D available

# Mortise Door Lock

022



**FEATURES:**

- \* Compatible with model #003, #005 deadlatch lock
- \* Zinc die cast housing black finish
- \* Extruded aluminium paddle in aluminium finish
- \* Reversible gear block
- \* Either right or left hand for push or pull operation available
- \* Size: 45×33×103mm

026



**FEATURES:**

- \* Compatible with model #005, #003, #008, #012 deadlatch lock
- \* Reversible for right or left hand door
- \* With cam plug
- \* Heavy duty cast alloy construction
- \* Satin aluminium finish
- \* Escutcheon plate sized 34×101mm

035



023



**FEATURES:**

- \* Aluminium faceplate
- \* For aluminium door lock
- \* AL/DU/BK finish available
- \* Flat, radius, bevel type available

024



**FEATURES:**

- \* For aluminium door lock
- \* With weather strip
- \* AL/DU finish available
- \* Radius type

025

*Exit Indicator*



**FEATURES:**

- \* Zinc alloy in anodized silver/ bronze finish available
- \* "LOCKED" in red, "OPEN" in green letters
- \* With label "this door must remain unlocked during business hours"

031

*Two-point Bolt*



**FEATURES:**

- \* An aluminum-letters-on-red indicator shows door is locked
- \* Compatible with #012, #013, #015 series locks, and provides multi-points security for paired door
- \* 3/8" hexagonal Hardened steel bolt, zinc plated
- \* Zinc alloy knob, satin chromed (US26D)
- \* Rod 1/4", fully threaded, length 680mm, 985mm, 1114mm, 1280mm, 1317mm, 1460mm available
- \* 2 pcs guide bracket provided

029

*Header bolt for long-throw deadlock*



**FEATURES:**

- \* Add a top-of-door third locking point for pairs of doors
- \* Expanding bolt size : 1/2"× 1-1/2" × 5/8"
- \* Bolt case sized: 1-1/2" × 2-3/4" × 5/8"
- \* Header bolt mounted in the inactive leaf
- \* Adjustable bolt length up for door height
- \* Head strike provided

418/419



**FEATURES:**

- \* Throw bolt / Hook bolt made of 5 ply laminated steel
- \* Backset: 1"
- \* With aluminum faceplate
- \* With 3 iron cross keys
- \* AL / DU finish available

402



402SS

**FEATURES:**

- \* #402 steel lock body, zinc plated
- \* #402SS stainless steel lock body
- \* With stainless steel hook
- \* Hookbolt lock for narrow stile sliding aluminum or timber patio door
- \* Suitable for narrow stile of sliding glass door (wall)
- \* Operate by bored-lock cylinder

436



435

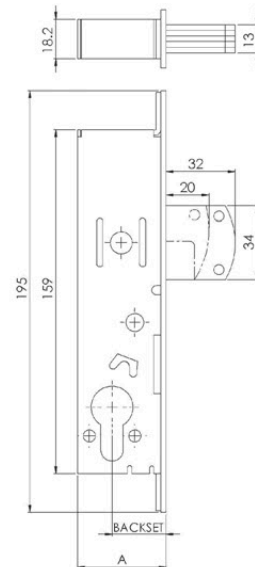


**FEATURES:**

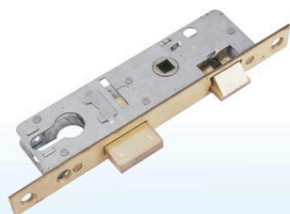
- \* With euro profile cylinder version
- \* Bolt made of 5 ply laminated steel
- \* Throw bolt center, with rotatable, hardened 7mm dia. pin to resist hacksaw attack
- \* #435 Hardened hookbolt to resist hacksaw attack
- \* Backset : 25/30/40mm available

Backset	A
25	41
30	46
40	55

(mm)



020



50DS3



**FEATURES:**

- \* Latch can be reversed
- \* Brass plated zinc deadbolt
- \* Backset 23mm
- \* Clearance between center to center of spindle and cylinder 66mm
- \* Case size: 14×38×146mm

**FEATURES:**

- \* Backset: 50mm
- \* With 3 iron deadbolts, chrome plated
- \* With stainless steel faceplate and strike
- \* 2-turn bolt made of steel 9mm dia. each
- \* 300,000 life cycles guaranteed

