

Metal Bellows Coupling I Series KPP

- /// plug-in design // simple installation // EASY-clamping hub
- /// high torsional stiffness // backlash-free, precise torque transmission
- /// sturdy whole metal version

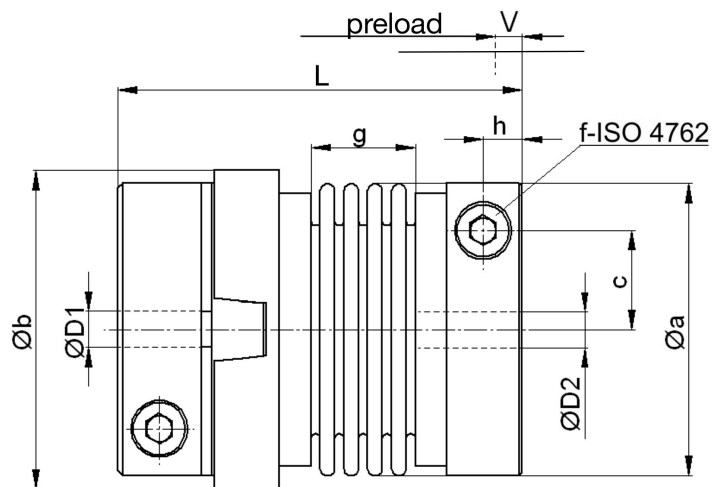
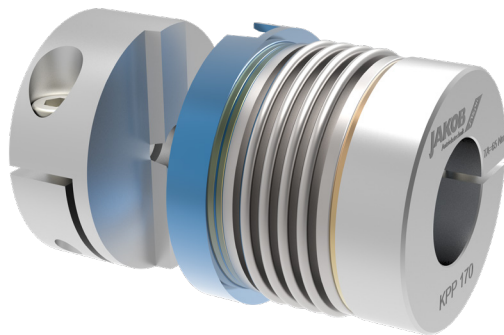
technical data:

KPP size	T _N [Nm]	moment of inertia [10 ⁻³ kgm ²]	torsional stiffness [Nm/arcmin]	max. shaft misalignment [mm]		axial spring rate [N/mm]	lateral spring rate [N/mm]	tightening torque screw f i [Nm] (*)	axial pre-load force ca. [N]	nmax. [upm]
				axial±	lateral					
10	10	0,033	2	0,6	0,15	20	93	8 -	30	23000
20	20	0,17	4,6	0,5	0,2	70	480	14 -	110	17000
35	35	0,17	5	0,5	0,2	70	480	14 -	110	17000
60	60	0,34	8	0,6	0,2	70	650	35 (30)*	110	14000
100	100	0,46	12	0,6	0,2	120	1200	35 (30)*	180	13000
170	170	0,90	19	0,8	0,2	100	1000	65 (50)*	150	11000
270	270	2,2	31	0,8	0,2	95	1350	115 (90)*	140	9500
400	400	2,4	45	0,7	0,2	135	1500	115 (90)*	200	9500
600	600	5,8	67	0,7	0,2	145	3000	180 (140)*	220	8000

(*) note: reduced tightening torque for bigger hub bore diameter - see also Ø D 1/2max!
 temperature range: -40°C up to +200°C

material:

bellows: stainless steel
 hubs: high-tensile strength aluminum
 screws: ISO 4762 / 12.9



Dimensions [mm]: length dimensions according to DIN ISO 2768 cH

KPP	Øa	Øb	c1/c2	f	g	h1/h2	V	L**	mass ~ [kg]	ØD1 min-max	ØD2 min-max
10	40	43	13/13	M 5	18	6/6	1-1,5	62	0,15	6-20	6-19
20	56	61	19/19	M 6	21	8/8	1-1,5	77,5	0,38	8-30	8-32
35	56	61	19/19	M 6	21	8/8	1-1,5	77,5	0,38	10-30	10-32
60	66	71	22/22	M 8	23	8,5/9	1-1,5	85,5	0,60	13-28 (34)*	13-28 (35)*
100	71	75	25/25	M 8	23,5	8,5/9	1-1,5	86	0,66	14-34 (38)*	14-34 (38)*
170	82	87	28,5/28,5	M 10	28	11/11,5	1-1,5	99,5	0,95	18-35 (43)*	18-35 (43)*
270	101	106	35/35	M 12	29	12/15	1-1,5	106,5	1,6	25-45 (55)*	25-45 (55)*
400	101	106	35/35	M 12	33	12/13	1-1,5	110,5	1,7	28-45 (55)*	28-45 (55)*
600	122	126	43,5/42	M 14	36	13,5/16	1-1,5	122,5	2,7	32-55 (70)*	32-55 (68)*

* note: reduced tightening torque for bigger hub bore diameter - see also Ø D 1/2max!

**delivery length (± 1mm) – without preload -> see function description. Further sizes and lengths available on request.

note: size KPP 1300 with conical clamping hub on request

order example: KPP 170 - D1 = 28^{G7} D2 = 35^{H7}