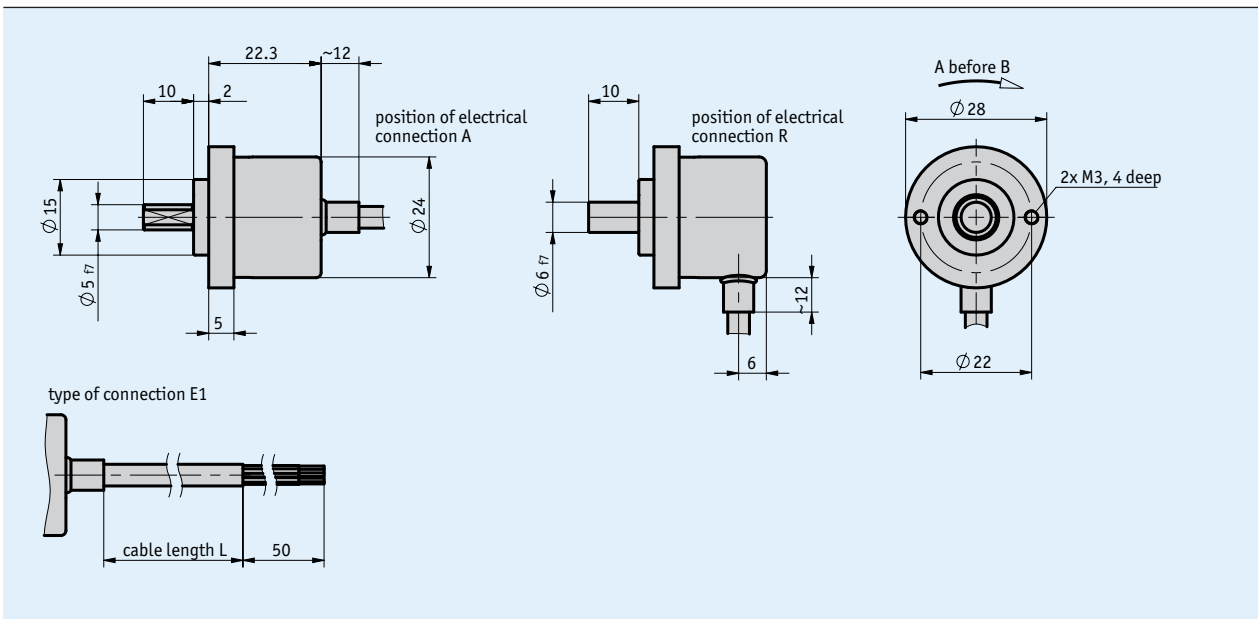


### Profile

- Small design,  $\varnothing$  28 mm
- Resolutions of max. 1024 pulses/revolution
- Robust bearing construction
- Short circuit-proof outputs



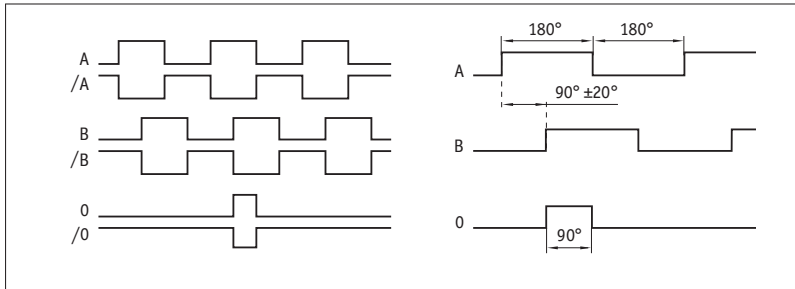
### Mechanical data

Feature	Technical data	Additional information
Shaft	stainless steel	
Housing	aluminum	
Speed	$\leq 12000$ rpm	
Moment of inertia	$\sim 0.1 \times 10^{-6}$ kgm <sup>2</sup>	
Starting torque	$< 0.01$ Nm at 20 °C	
Shaft load rating	10 N	radial
	20 N	axial
Cable sheath	PVC	$\sim \varnothing 4.5$ mm
Cable bending radius	25 mm	static
	75 mm	dynamic
Weight	$\sim 0.06$ kg	

### Electrical data

Feature	Technical data	Additional information
Operating voltage	8 ... 30 V DC	reverse polarity protected
Current consumption	typical 50 mA	(no load)
Output signal level high	$\geq U_B - 3.0 \text{ V}$	short-circuit proof
Output signal level low	$\leq 0.5 \text{ V}$	short-circuit proof
Pulse frequency	$\leq 160 \text{ kHz}$	
Load	$\pm 50 \text{ mA}$	max. adm.
Type of connection	open cable end	

### ■ signal pattern



### Ambient conditions

Feature	Technical data	Additional information
Ambient temperature	-20 ... 85 °C	
EMC	EN 61000-6-2 EN 61000-6-3	interference resistance / immission emitted interference / emission
Protection category	IP65 (housing side) IP64 (shaft side)	EN 60529 EN 60529
Shock resistance	1000 m/s <sup>2</sup> , 6 ms	EN 60068-2-27
Vibration resistance	100 m/s <sup>2</sup> , 10 ... 2000 Hz	EN 60068-2-6

### Pin assignment

Signal	Cable color PP	Cable color OP
GND	white	white
+UB	brown	brown
A	green	green
/A		yellow
B	yellow	gray
/B		pink
0	gray	blue
/0		red

### Order

#### Ordering table

Feature	Ordering data	Specification	Additional information
Pulses/revolution	... <b>A</b>	36, 50, 100, 200, 250, 360, 400, 500, 512, 1000, 1024	
Position of electrical connection	<b>A</b>	axial	
	<b>R</b>	radial	
Cable length	... <b>C</b>	02.0, 03.0, 05.0, 08.0, 10.0, 15.0 in m	
Output circuit	<b>PP</b>	Push-pull	
	<b>OP</b>	Push-pull with inversion	
Shaft diameter	<b>5x10</b>	ø5 mm, length 10 mm	with area
	<b>6x10</b>	ø6 mm, length 10 mm	

#### Order key

IV2800 - **AB0** -  - **E1** -  -  - **F28** -  -  - **IP64**

A
B
C
D
E

Scope of delivery: IV2800, Quick Start Guide

#### Accessories:

Electronic display MA10/4

[www.siko-global.com](http://www.siko-global.com)

Electronic display MA48

[www.siko-global.com](http://www.siko-global.com)

Electronic display MA55

[www.siko-global.com](http://www.siko-global.com)

Wire-actuated encoder SG10

[www.siko-global.com](http://www.siko-global.com)

Wire-actuated encoder SG21

[www.siko-global.com](http://www.siko-global.com)