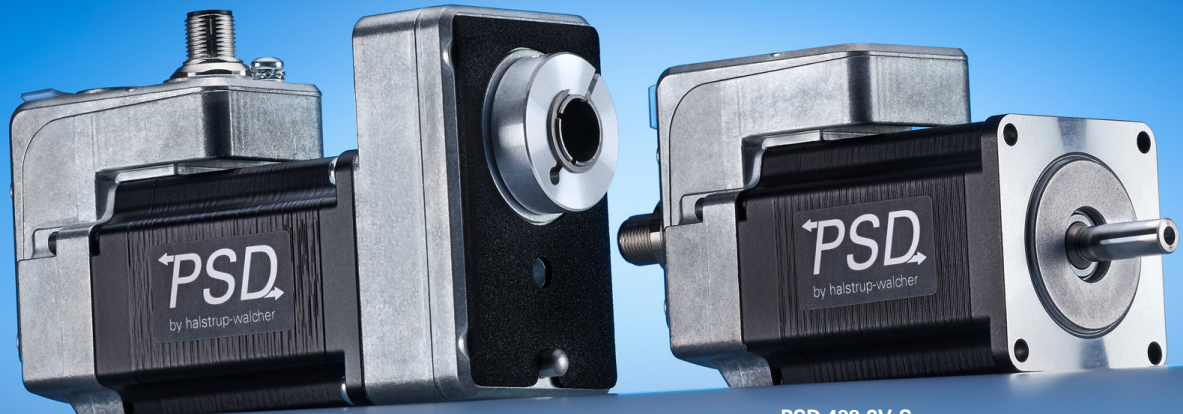


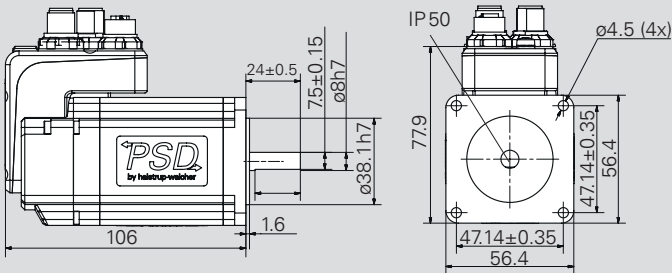
PSD 42x/43x



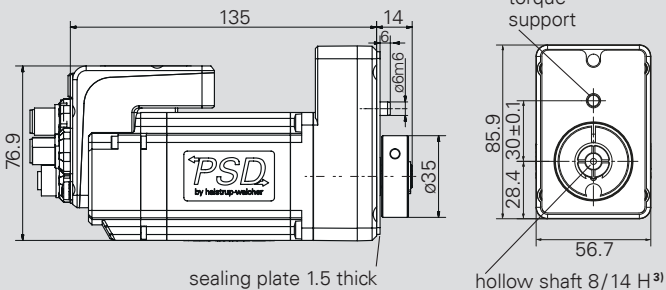
PSD 426-14H-S (6 Nm, 14 mm hollow shaft with gearbox)

PSD 432-8V-S

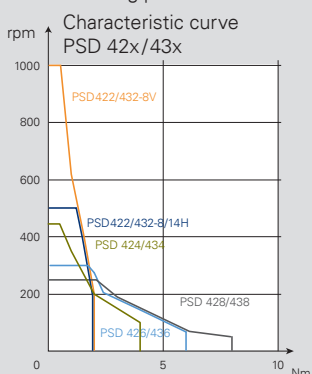
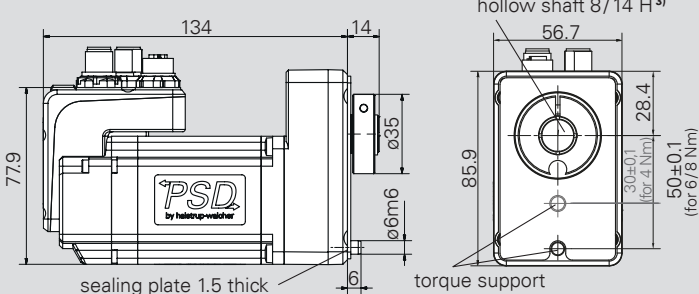
PSD 422-8V (solid shaft)



PSD 432-8 / 14H (hollow shaft, 2 Nm)



PSD 426-8 / 14H (hollow shaft, 4, 6 and 8 Nm)



³) Hollow shaft	ø8 ⁵⁾	ø14
Tolerance	H7	
Plug depth	20	
Cylinder screw	DIN 912 M4x16	

⁵) only up to 5 Nm possible

Dimensions in mm

PSD 42x/43x	Nominal torque / Nominal rated speed ¹⁾	Self-holding torque (currented)	Max. speed	Positioning range ²⁾
2-8V	2 Nm/200 rpm	1 Nm	1000 rpm	4026 rot.
2-8H	2 Nm/200 rpm	1 Nm	500 rpm	4026 rot.
2-14H	2 Nm/200 rpm	1 Nm	500 rpm	4026 rot.
4-14H	4 Nm/100 rpm	2 Nm	482 rpm	1938 rot.
6-14H	6 Nm/63 rpm	3 Nm	300 rpm	1274 rot.
8-14H	8 Nm/50 rpm	4 Nm	250 rpm	977 rot.

¹⁾ at nominal supply voltage

²⁾ not subject to mechanical limits

Bus communication

CANopen, IO-Link³⁾, PROFINET, EtherCAT, EtherNet/IP

Supply voltage	24 VDC ± 10 % galvanically separated between motor and control
Power consumption	max. 96 W
Nominal current	4.0 A
Power consumption (control unit)	0.1 A
Positioning accuracy	± 0.7° for 6/8 Nm ± 0.8° for 4 Nm ± 1.8° for 2 Nm
Absolute measurement system	magnetic, without reference run, without buffer battery
Shock resistance in accordance with IEC/DIN EN 60068-2-27	half sinus (3 axes) 50 g 11 ms 3 shocks pos./neg. per axis
Vibration resistance in accordance with IEC/DIN EN 60068-2-6	sliding sinus (1 octave/min, 3 axes) 10 .. 2000 Hz 50 m/s ² (approx. 5 g) 10 frequency cycles
Output shaft	8 mm solid shaft with flattening or 8/14 mm hollow shaft ⁴⁾ with torque support
Maximum axial force	30 N, 20 N with attached housing
Maximum radial force	90 N, 40 N with attached housing
Ambient temperature	0 .. 40 °C
Storage temperature	-10 .. 70 °C
Protection class	IP50 or IP65 ⁵⁾
Weight	max. 2 kg (1.5 kg without gearbox)
Certificates	CE / UKCA, opt.: NRTL

³⁾ with E-Ident function

⁴⁾ see table next to the characteristic curve

⁵⁾ IP65 installed (motor shaft IP50)

ORDER KEY DIRECT DRIVES PSD

Order code	A	B	C	D	E	F	G	H							
PSD															
A	Type	B	Torque/ Output shaft	C	Rotation shaft/ Housing	D	Bus communication ¹⁾	E	Electical connections	F	Protection class	G	Software modules	H	Certificates
	40: horizontal	with gearbox:	1-5V 1-8H 1-14H	S: direct or 0° 1: 90° 2: 180° 3: 270°	CA: CANopen IO: IO-Link PN: PROFINET EC: EtherCAT EI: EtherNet/ IP	0: standard ²⁾	50: IP 50 65: IP 65 ³⁾	1: standard M: with modulo function ⁴⁾ S: with changeover of parameter set ⁴⁾ P: with target speed in process data ⁴⁾ Z: with modulo function and changeover of pa- rameter set and target speed in process data ⁴⁾	0: CE / UKCA N: NRTL						
	41: vertical		3-8H 3-14H												
	42: horizontal	2-8V 2-8H 2-14H													
	43: vertical	4-14H 6-14H 8-14H													
	48: horizontal	0-5V 0-8H 0-14H													
	49: vertical	1-8H 1-14H													

B		C					
Key	Torque	Output shaft		Rotation shaft/Housing			
B1-B2	B1	B2	S	1	2	3	
direct	1-5V	1: 0.8 Nm	5V: 5 mm solid shaft		-	-	-
	1-8H 1-14H	1: 0.8 Nm	8H: 8 mm hollow shaft 14H: 14 mm hollow shaft				
with gearbox	3-8H 3-14H	3: 3 Nm	8H: 8 mm hollow shaft 14H: 14 mm hollow shaft				
direct	2-8V	2: 2 Nm	8V: 8 mm solid shaft		-	-	-
	2-8H 2-14H	2: 2 Nm	8H: 8 mm hollow shaft 14H: 14 mm hollow shaft				
with gearbox	4-14H 6-14H 8-14H	4: 4 Nm 6: 6 Nm 8: 8 Nm	14H: 14 mm hollow shaft				
direct	0-5V	0: 0.25 Nm	5V: 5 mm solid shaft		-	-	-
	0-8H 0-14H	0: 0.25 Nm	8H: 8 mm hollow shaft 14H: 14 mm hollow shaft				
with gearbox	1-8H 1-14H	1: 1 Nm	8H: 8 mm hollow shaft 14H: 14 mm hollow shaft				

¹⁾ others on request

²⁾ standard equipment: 3 plugs / sockets
with IO-Link: 1 plug

³⁾ IP 65 installed (motor shaft IP 50)

⁴⁾ only for IO-Link devices