



Chlorophyll

Chlorophyll is the green pigment found in leaves, grass, vegetables and all organisms capable of photosynthesis. The principal pigment is E140 Chlorophyll, however this is relatively unstable with weak colouring intensity. Often, the product is treated with copper salts to render E141 Cu Chlorophyll which has a more vibrant shade and greater stability.



Applications:

Dairy, Confectionary, Beverage, Prepared Foods, Meat

Forms Available:

Product Name	Labels	Form
Natracol Copper Chlorophyllin	E141(ii)	Water Soluble Powder
Natracol Acid Stable Copper Chlorophyllin	E141(ii)	Water Soluble Powder
Copper Chlorophyllin ASL	E141(ii)	Water Soluble Liquid

Stability Conditions:

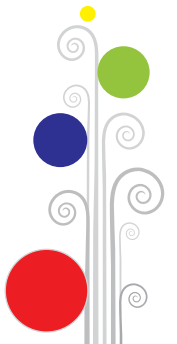
pH Range	Heat	Light
3 - 8	Very Good	Very Good

Labelling Recommendation:

E141(ii)

Shades:

Light to Dark Green



OUR OTHER BRANDS

