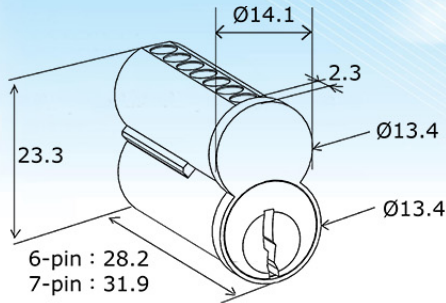


Interchangeable Core

Small Format (SFIC)



FEATURES:

- * Interchangeable & re-keyable core
- * With 1 control key and 2 operating keys
- * Different keyway available.
(Keyway: A, B, C, D, E, F, G, H, J, K, L, M, N, P, Q, WA, WB, WC, WG available)
- * Brass material, finish US4, US26, US26D, US32D available
- * 1,000,000 key combinations of 6-pin core
- * 10,000,000 key combinations of 7-pin core
- * No screwdriver and tool needed
- * Uncombined / KA / MK / GMK / GGMK system for optional order

2E73

File Cabinet Lock



FEATURES:

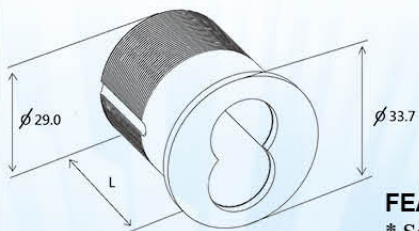
- * Compatible with 6-pin or 7-pin Small Format Interchangeable Core
- * Dimension : Length: 2-9/32" x Width: 3/4" x Height: 1-1/8"
- * Vertical mounting slot
- * Material : Solid Brass
- * Finish US03, US04, US26D, US32D

033

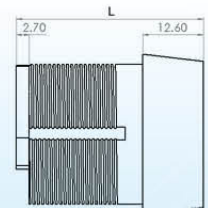
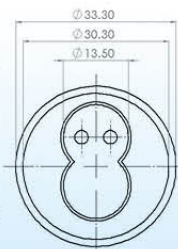
Mortise Cylinder Housing

033A

Tapered Head Mortise Housing



	Length(L)
6PINS	1-1/4"
7PINS	1-3/8", 1-1/2", 1-5/8", 1-3/4"
	1-7/8", 2", 2-1/8", 2-1/4", 2-3/8"
	2-1/2", 2-5/8", 2-3/4", 2-7/8", 3"



FEATURES:

- * Solid brass material
- * Different cams available
- * Different surface finished available (26D / 32D / US4 / US3)
- * #033 Stainless steel material available

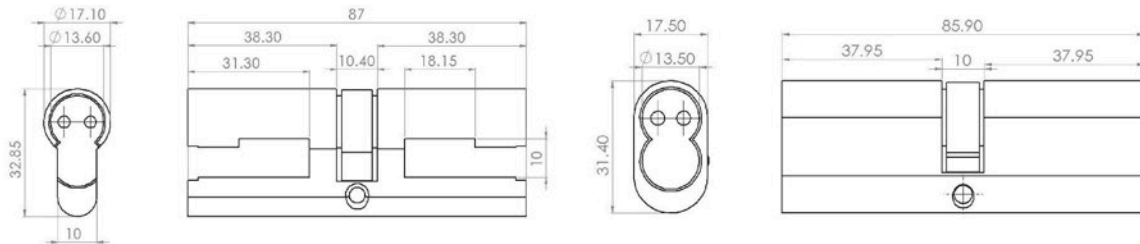
8E7E

Euro Profile Cylinder Housing



8E7H

Oval Profile Cylinder Housing

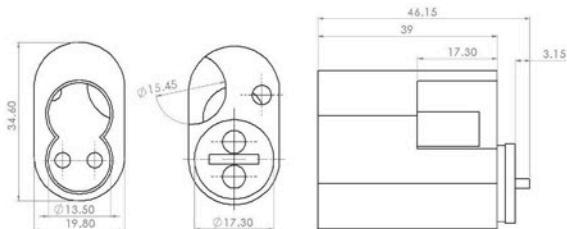


FEATURES:

- * For Small Format Interchangeable Core (SFIC)
- * #8E7E Conversion Cylinder for use with most Euro Profile Cylinder Locks
- * #8E7H Conversion Cylinder for use with most Oval Profile Cylinder Locks
- * Material : Solid brass
- * Type : Keyed on one side, double sides keyed, half type are available
- * Cylinder core with 6-pin or 7-pin (86mm) SFIC available
- * Different surface finished available (26D / 32D / US4 / US3)

8E7A

Scandinavian Oval Cylinder Housing



FEATURES:

- * For Small Format Interchangeable Core (SFIC)
- * Conversion cylinder for use with most Scandinavian Oval Cylinder Locks
- * Material : Solid Brass
- * Keyed on one side or both sides available
- * Cylinder for 6-pin or 7-pin (39mm) SFIC
- * Different surface finished available (26D / 32D / US4 / US3)

Cam Lock



FEATURES:

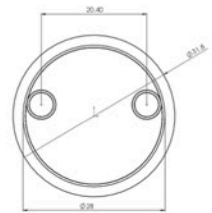
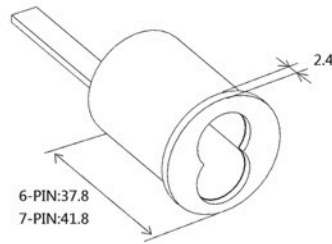
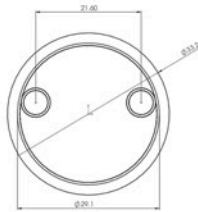
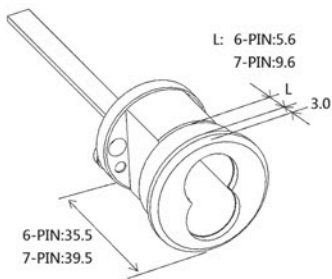
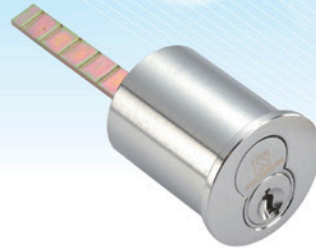
- * Fits for 6 or 7-pin Small Format Interchangeable Core (SFIC)
- * Diameter : 1-5/32"
- * Solid brass machined body
- * With brass ring
- * Different surface finished available (26D / 32D / US4 / US3)
- * Includes all parts necessary to lock up, down, right or left and in key-retaining non-key retaining function

Interchangeable Core

034

Rim Cylinder

036



FEATURES:

- * Compatible with 6 or 7-pin Small Format Interchangeable Core
- * Solid brass construction
- * Can be installed in rim locks & panic devices
- * With spindle, mounting plate & screws
- * Finish US3, US4, US26D, US32D available

2E74

Drawer Lock



FEATURES:

- * Compatible with 6-pin or 7-pin Small Format Interchangeable Core
- * Brass cylinder housing sized: 29mm dia*27mm long
- * Zinc alloy latch & front plate & base
- * Clearance between center to center of 2 screws : 56mm
- * Finish US03, US04, US26D, US32D

11B / 21B / 41B

Padlock Housing



FEATURES:

- * Padlock Case: Solid brass
- * Shackle: 304 Stainless Steel
- * Shackle interchangeable by tool
- * Key retained or non-retained available
- * Different surface finish available (US3, US4, US26D, US32D)
- * 11B series: padlock case: 1-5/8" (W), 2-1/16" (L), 25/32" (T)
- * 21B series: padlock case: 1-25/32" (W), 2-1/16" (L), 13/16" (T)
- * 41B series: padlock case: 1-15/16" (W), 2-1/16" (L), 7/8" (T)
- * Length of Shackle: 3/4", 1-1/2", 2", 4"



- A : A4, 9 fl., No. 6 Siwei 3rd Road, Lingya dist., Kaohsiung 80250, TAIWAN
- T : 886-7- 3355235
- F : 886-7- 3356680
- W : <http://secutor.com.tw>
<http://secutor.en.alibaba.com>
- E : secutor@ms66.hinet.net
secutor.corp@msa.hinet.net