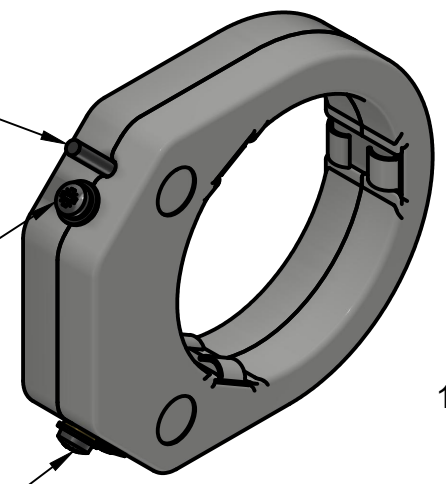


Secondary terminal custom defined
 Recommendation:
 0,5 up to 100m 3pole shielded cable
 open ends with shield - outlet

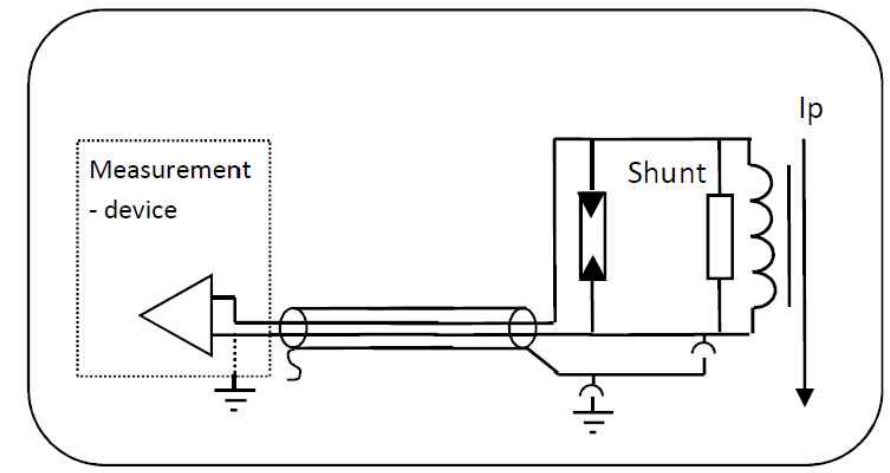
Ground method

Method	Screw (NC)
floate earth potential	closed
reference earth potential	open

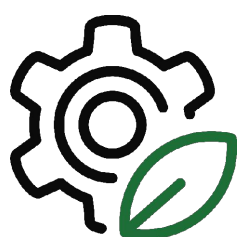


Ground terminal
 M5

Function principle:



Standard: IEC 61869-1, IEC 61869-6, IEC 61869-10
 Isolation level: 0,72kV/3kV/-
 Rated current : 300A ext. 200%
 Temperature range: -40/80°C
 Accuracy class: 0,2S/0,2/0,5S/0,5/1/3 max P10
 Secondary output: 225mV or customer defined
 Burden: >20kΩ
 Ith: 25kA 3sec.

Dept. GWP	Technical reference	Created by W. Bacher 21.09.2018	Approved by N. Juschicz 21.09.2018
 1:1	Document type Drawing	Document status	
	Title Indoor Current Sensor Ring Type	DWG No. NxxxR-xx	
		Rev. 2	Date of issue 30.03.2019